

VPS25 antibody

Catalog Number: 116776

Product name

VPS25 antibody

Specificity

Human, Mouse, Rat; other species not tested.

Antibody description

VPS25 Rabbit Polyclonal antibody. Positive IHC detected in human breast cancer tissue. Positive WB detected in HeLa cells, HepG2 cells, human brain tissue, mouse liver tissue, rat liver tissue. Observed molecular weight by Western-blot: 21 kDa

Preparation

This antibody was obtained by immunization of VPS25 recombinant protein (Accession Number: NM_032353). Purification method: Antigen affinity purified.

Formulation

PBS with 0.02% sodium azide and 50% glycerol pH 7.3.

Storage

Store at -20°C. DO NOT ALIQUOT

Clonality

Polyclonal

Ig Type

Rabbit IgG

Applications

ELISA, WB, IHC

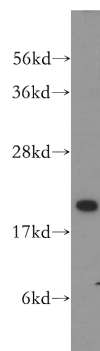
Dilutions

Recommended Dilution:

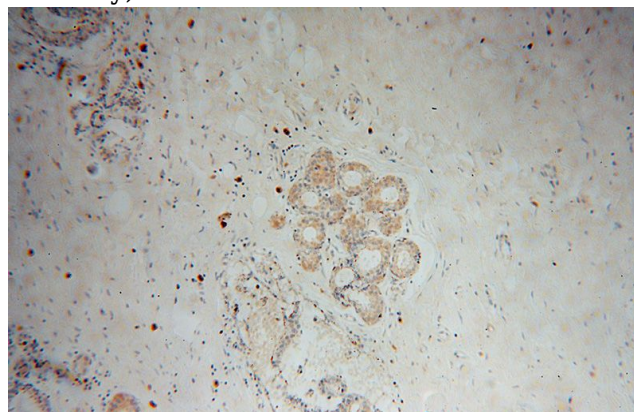
WB: 1:500-1:5000

IHC: 1:20-1:200

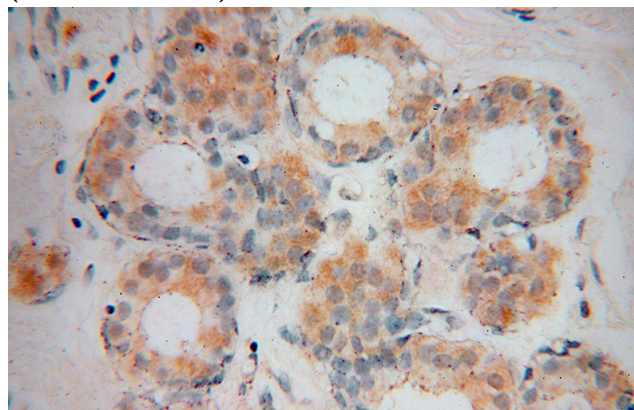
Validations



HeLa cells were subjected to SDS PAGE followed by western blot with Catalog No:116776(VPS25 antibody) at dilution of 1:500



Immunohistochemical of paraffin-embedded human breast cancer using Catalog No:116776(VPS25 antibody) at dilution of 1:50 (under 10x lens)



Immunohistochemical of paraffin-embedded human breast cancer using Catalog

VPS25 antibody



Catalog Number: 116776

No:116776(VPS25 antibody) at dilution of 1:50 (under 40x lens)