

# Anti-STAT3 Rabbit antibody

Catalog Number: 166776

## Product name

Anti-STAT3 Rabbit antibody

## Specificity

Human

## Antibody description

STAT3 Rabbit polyclonal antibody

## Preparation

Antigen: The antiserum derived from human STAT3 around the phosphorylation site of serine 727.

## Formulation

10mM PBS with 0.02% sodium azide, 50% glycerol.

## Storage

Store at 4°C short term. Store at -20°C long term. Avoid freeze / thaw cycle.

## Clonality

Polyclonal

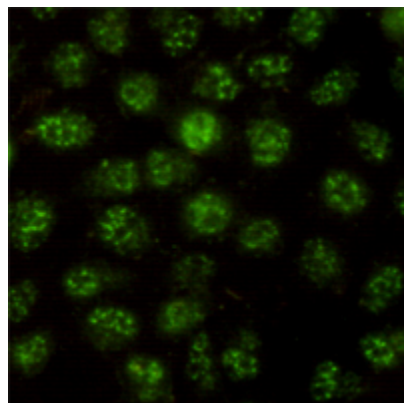
## Ig Type

Rabbit IgG

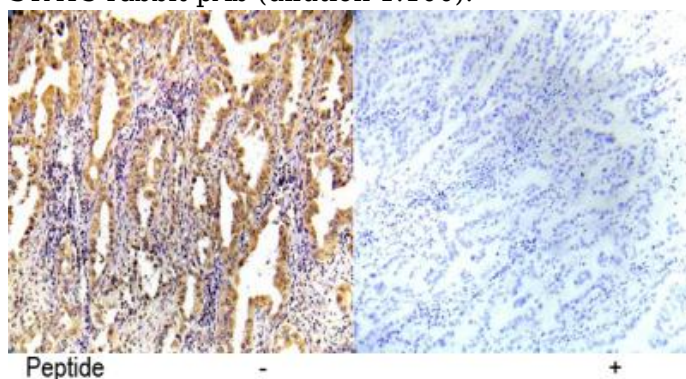
## Applications

WB, ICC/IF, IHC-P

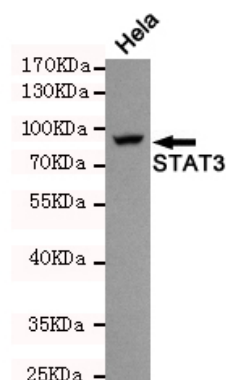
## Validations



Immunocytochemistry staining of HeLa cells using STAT3 rabbit pAb (dilution 1:100).



Immunohistochemical analysis of paraffin-embedded human lung carcinoma tissue using



STAT3 (Ab-727) antibody.

Western blot detection of STAT3 in HeLa cell lysate using STAT3 rabbit pAb (1:500). Predicted band size: 88kDa. Observed band size: 88kDa.