

# MTHFD1 antibody

Catalog Number: 112776

## Product name

MTHFD1 antibody

IP: 1:200-1:2000

IHC: 1:20-1:200

## Specificity

Human, Mouse; other species not tested.

## Antibody description

MTHFD1 Rabbit Polyclonal antibody. Positive IHC detected in human colon cancer tissue. Positive IP detected in mouse kidney tissue. Positive WB detected in mouse kidney tissue, HEK-293 cells, human brain tissue. Observed molecular weight by Western-blot: 101 kDa

## Preparation

This antibody was obtained by immunization of MTHFD1 recombinant protein (Accession Number: NM\_005956). Purification method: Antigen affinity purified.

## Formulation

PBS with 0.1% sodium azide and 50% glycerol pH 7.3.

## Storage

Store at -20°C. DO NOT ALIQUOT

## Clonality

Polyclonal

## Ig Type

Rabbit IgG

## Applications

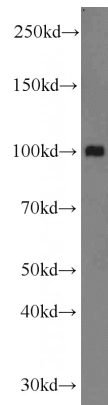
ELISA, WB, IHC, IP

## Dilutions

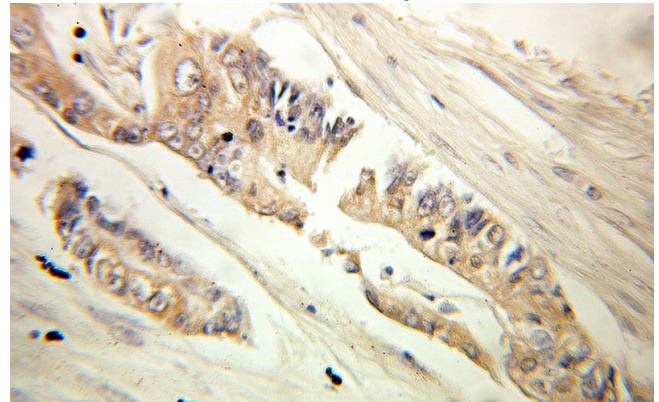
Recommended Dilution:

WB: 1:200-1:2000

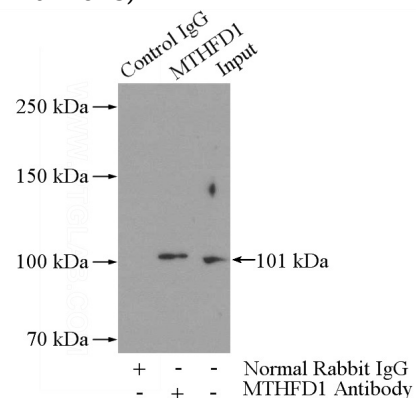
## Validations



mouse kidney tissue were subjected to SDS PAGE followed by western blot with Catalog No:112776(MTHFD1 antibody) at dilution of 1:600



Immunohistochemical of paraffin-embedded human colon cancer using Catalog No:112776(MTHFD1 antibody) at dilution of 1:100 (under 10x lens)



IP Result of anti-MTHFD1 (IP:Catalog No:112776,

# MTHFD1 antibody



Catalog Number: 112776

---

5ug; Detection:Catalog No:112776 1:600) with mouse kidney tissue lysate 4000ug.