

IL20RB antibody



Catalog Number: 111776

Product name

IL20RB antibody

Specificity

Human; other species not tested.

Antibody description

IL20RB Rabbit Polyclonal antibody. Positive WB detected in MCF7 cells, Apoptosised HeLa cells, HeLa cells, K-562 cells. Positive IF detected in HepG2 cells. Positive FC detected in K-562 cells. Observed molecular weight by Western-blot: 45kd,66-70kd

Preparation

This antibody was obtained by immunization of IL20RB recombinant protein (Accession Number: BC033292). Purification method: Antigen affinity purified.

Formulation

PBS with 0.02% sodium azide and 50% glycerol pH 7.3.

Storage

Store at -20°C. DO NOT ALIQUOT

Clonality

Polyclonal

Ig Type

Rabbit IgG

Applications

ELISA, WB, IF, FC

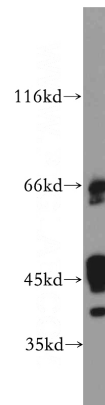
Dilutions

Recommended Dilution:

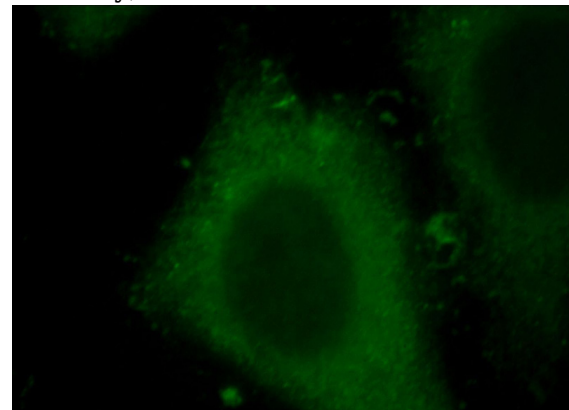
WB: 1:500-1:5000

IF: 1:10-1:100

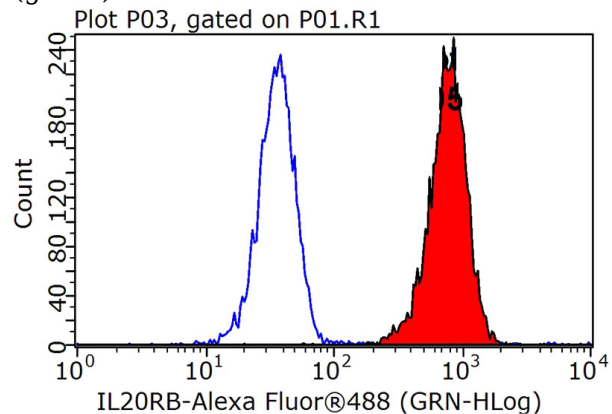
Validations



MCF7 cells were subjected to SDS PAGE followed by western blot with Catalog No:111776(IL20RB antibody) at dilution of 1:500



Immunofluorescent analysis of HepG2 cells, using IL20RB antibody Catalog No:111776 at 1:25 dilution and FITC- labeled goat anti-Rabbit IgG (green).



1X10⁶ K-562 cells were stained with 0.2ug IL20RB antibody (Catalog No:111776, red) and

IL20RB antibody



Catalog Number: 111776

control antibody (blue). Fixed with 90% MeOH
blocked with 3% BSA (30 min). Alexa Fluor 488-

conjugated AffiniPure Goat Anti-Rabbit IgG(H+L)
with dilution 1:1000.