

# Anti-KYNU antibody



Catalog Number: 100776

## Product name

Anti-KYNU antibody

## Immunogen

[Human KYNU \(His Tag\) recombinant protein](#)

## Specificity

Human KYNU

## Antibody description

Rabbit polyclonal to KYNU

## Preparation

Produced in rabbits immunized with purified, recombinant Human KYNU (rh KYNU; Q16719; Met1-Asn465). KYNU specific IgG was purified by Human KYNU affinity chromatography.

## Formulation

0.2  $\mu$ m filtered solution in PBS

## Storage

This antibody can be stored at 2°C-8°C for one month without detectable loss of activity. Antibody products are stable for twelve months from date of receipt when stored at -20°C to -80°C.

Preservative-Free.

Sodium azide is recommended to avoid contamination (final concentration 0.05%-0.1%). It is toxic to cells and should be disposed of properly. Avoid repeated freeze-thaw cycles.

## Clonality

Polyclonal

## Ig Type

Rabbit IgG

## Applications

ELISA, WB, IP

## Dilutions

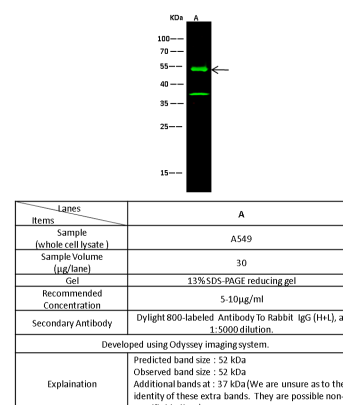
WB: 5-10  $\mu$ g/ml

ELISA: 0.1-0.2  $\mu$ g/mL

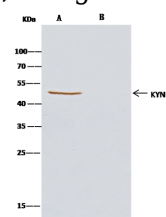
This antibody can be used at 0.1-0.2  $\mu$ g/mL with the appropriate secondary reagents to detect Human KYNU. The detection limit for Human KYNU is < 0.039 ng/well.

IP: 1-4  $\mu$ g/mg of lysate

## Validations



## KYNU Antibody, Rabbit PAb, Antigen Affinity



Lanes	A	B
Sample (whole cell lysate)	A549	
Sample quantity	0.5 mg	
IP antibody type	KYNU-RP02	Rabbit Blank IgG
IP antibody quantity	2 $\mu$ g	
Protein G agarose	15 $\mu$ l of 50% Protein G Agarose	
Gel	13% SDS-PAGE reducing gel	
Primary antibody	KYNU antibody at 2 $\mu$ g/ml	
Secondary antibody	Clear-Blue <sup>®</sup> IP Detection Reagent (HRP) at 1:1000 dilution.	

Purified, Western blot

KYNU Antibody, Rabbit PAb, Antigen Affinity  
Purified, Immunoprecipitation