

General Information

Gene Name Synonym

Mechano growth factor; Somatomedin-C

Protein Construction

A DNA sequence encoding the mature form of human IGF1 isoform 1 (P05019-1) (Gly 49-Ala 118) was expressed and purified.

Organism

Human

Expression Host

E. coli

QC Testing

Activity

1. Measured by its ability to bind human IGFBP4-His (Cat:501617) in a functional ELISA.
2. Measured by its ability to bind mouse IGFBP4-His (Cat:500242) in a functional ELISA.
3. Measured by its ability to bind Cynomolgus IGFBP1-His (Cat:500751) in a functional ELISA.
4. Measured by its ability to bind human IGF1R (aa 954-1367)-GST (Cat:501890) in a functional ELISA.
5. Measured in a serum-free cell proliferation assay using MCF-7 human breast cancer cells. The ED₅₀ for this effect is typically 0.5-2 ng/mL.
6. Measured in a cell proliferation assay using MCF-7 cells. The ED₅₀ for this effect is typically 1-4 ng/mL.

Purity

> 95 % as determined by SDS-PAGE

Endotoxin

Please contact us for more information.

Stability

Samples are stable for up to twelve months from date of receipt at -70°C

Predicted N terminal

Met

Molecular Mass

The recombinant mature form of human IGF1 consisting of 71 amino acids and has a calculated molecular mass of 7.8KDa.

Formulation

Lyophilized from sterile 30% Acetonitrile, 0.1% TFA

1. 5 % trehalose and mannitol are added as protectants before lyophilization.
2. Please contact us for any concerns or special requirements.

Usage Guide

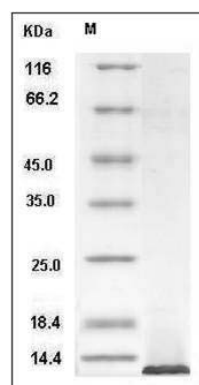
Storage

Store it under sterile conditions at -20°C to -80°C. It is recommended that the protein be aliquoted for optimal storage. Avoid repeated freeze-thaw cycles.

Reconstitution

Adding sterile water, prepare a stock solution of 0.25 mg/ml. Concentration is measured by UV-Vis.

SDS-PAGE



Human IGF1 / IGF-I Protein SDS-PAGE