

General Information

Gene Name Synonym

Mesoderm development candidate 2; Mesoderm development protein; Renal carcinoma antigen NY-REN-61

Protein Construction

A DNA sequence encoding the human MESDC2 (NP_055969.1) (Ala 34-Lys 230) was fused with a signal peptide at the N-terminus and a polyhistidine tag at the C-terminus.

Organism

Human

Expression Host

Human Cells

QC Testing

Purity

> 97 % as determined by SDS-PAGE

Endotoxin

< 1.0 EU per μg of the protein as determined by the LAL method

Stability

Samples are stable for up to twelve months from date of receipt at -70°C

Predicted N terminal

Ala 34

Molecular Mass

The recombinant human MESDC2 consists of 208 amino acids and has a predicted molecular mass of 23.6 kDa. The apparent molecular mass of rh MESDC2 is approximately 27 kDa in SDS-PAGE under reducing conditions.

Formulation

Lyophilized from sterile PBS, pH 7.4

1. 5 % trehalose and mannitol are added as protectants before lyophilization.
2. Please contact us for any concerns or special requirements.

Usage Guide

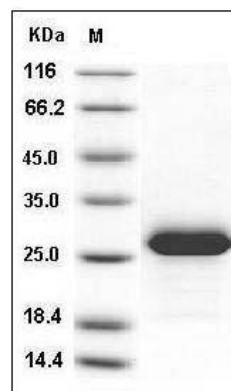
Storage

Store it under sterile conditions at -20°C to -80°C . It is recommended that the protein be aliquoted for optimal storage. Avoid repeated freeze-thaw cycles.

Reconstitution

Adding sterile water, prepare a stock solution of 0.25 mg/ml. Concentration is measured by UV-Vis.

SDS-PAGE



Human MESDC2 / MESD Protein (His Tag) SDS-PAGE