

Anti-Phospho-Hsp90 beta (Ser254) Rabbit antibody



Catalog Number: 166676

Product name

Anti-Phospho-Hsp90 beta (Ser254) Rabbit antibody

Specificity

Human, Mouse, Rat

Antibody description

Phospho-Hsp90 beta (Ser254) Rabbit polyclonal antibody

Preparation

Antigen: Peptide sequence around phosphorylation site of serine 254 (V-G-S(p)-D-E) derived from Human HSP90B.

Formulation

Supplied at 1.0mg/mL in phosphate buffered saline (without Mg²⁺ and Ca²⁺), pH 7.4, 150mM NaCl, 0.02% sodium azide and 50% glycerol.

Storage

Store at 4°C short term. Store at -20°C long term. Avoid freeze / thaw cycle.

Clonality

Polyclonal

Ig Type

Rabbit IgG

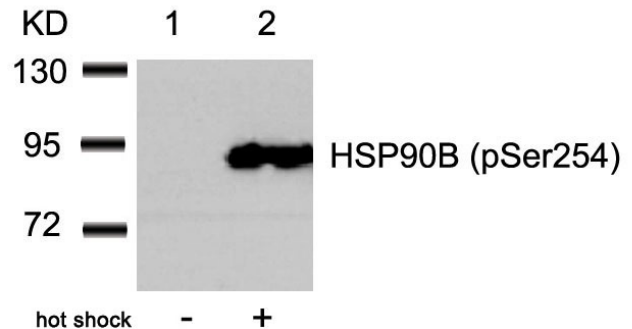
Applications

WB

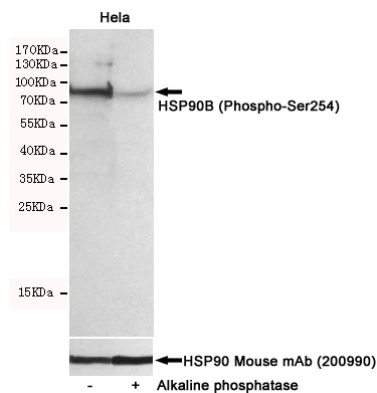
Dilutions

WB:1/500-1/1000

Validations



Western blot analysis of extracts from HeLa cells untreated (lane 1) or treated with hot shock (lane 2) using HSP90B (Phospho-Ser254) Antibody .



Western blot detection of HSP90B (Phospho-Ser254) in HeLa cells untreated or treated with Alkaline phosphatase using HSP90B (Phospho-Ser254) Rabbit pAb (dilution 1:500, upper) HSP90 Mouse mAb (200990, lower). Predicted band size:90kDa. Observed band size:90kDa.