

RECQL4 antibody



Catalog Number: 114676

Product name

RECQL4 antibody

IP: 1:500-1:5000

IHC: 1:20-1:200

Specificity

Human; other species not tested.

IF: 1:20-1:200

Antibody description

RECQL4 Rabbit Polyclonal antibody. Positive IF detected in HepG2 cells. Positive IHC detected in human kidney tissue, human testis tissue. Positive IP detected in HeLa cells. Positive WB detected in HeLa cells. Observed molecular weight by Western-blot: 140-150 kDa

Preparation

This antibody was obtained by immunization of RECQL4 recombinant protein (Accession Number: BC013277). Purification method: Antigen affinity purified.

Formulation

PBS with 0.02% sodium azide and 50% glycerol pH 7.3.

Storage

Store at -20°C. DO NOT ALIQUOT

Clonality

Polyclonal

Ig Type

Rabbit IgG

Applications

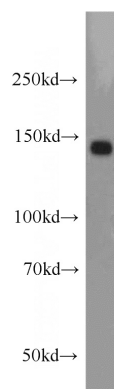
ELISA, WB, IF, IHC, IP

Dilutions

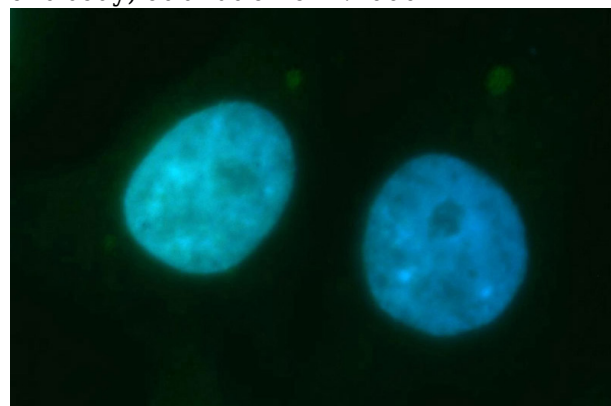
Recommended Dilution:

WB: 1:500-1:5000

Validations



HeLa cells were subjected to SDS PAGE followed by western blot with Catalog No:114676(RECQL4 antibody) at dilution of 1:1000



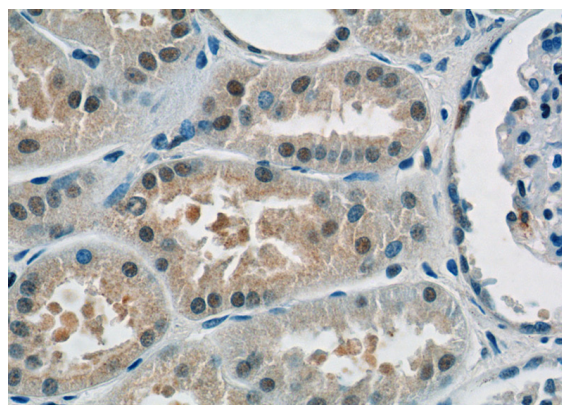
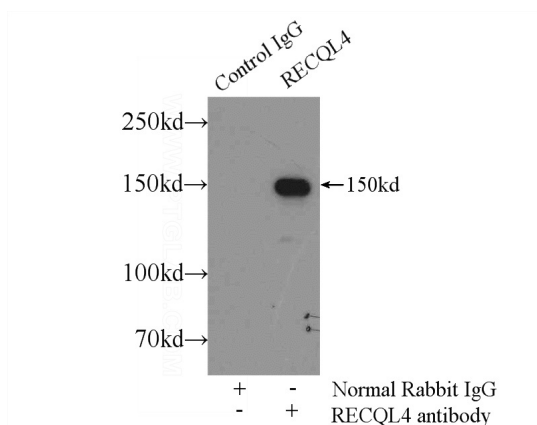
Immunofluorescent analysis of HepG2 cells, using RECQL4 antibody Catalog No:114676 at 1:100 dilution and FITC-labeled donkey anti-rabbit IgG(green). Blue pseudocolor = DAPI (fluorescent

RECQL4 antibody

Catalog Number: 114676

DNA dye).

IP Result of anti-RECQL4 (IP:Catalog No:114676, 4ug; Detection:Catalog No:114676 1:1000) with HeLa cells lysate 2500ug.



Immunohistochemistry of paraffin-embedded human kidney tissue slide using Catalog No:114676(RECQL4 Antibody) at dilution of 1:50 (under 40x lens)