

# Anti-Sumo 2/3 (3F7) Mouse antibody



Catalog Number: 168276

## Product name

Anti-Sumo 2/3 (3F7) Mouse antibody

## Specificity

Human

## Antibody description

Sumo 2/3 (3F7) Mouse monoclonal antibody

## Preparation

Antigen: Purified recombinant human SUMO-2/3 protein fragments expressed in E.coli.

## Formulation

PBS(pH 7.4) containing with 0.03% Proclin300 and 50% glycerol.

## Storage

Store at 4°C short term. Store at -20°C long term. Avoid freeze / thaw cycle.

## Clonality

Monoclonal

## Ig Type

Mouse IgG2b

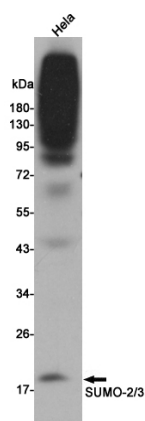
## Applications

WB

## Dilutions

WB: 1/1000

## Validations



Western blot detection of SUMO-2/3 in HeLa cell lysates using SUMO-2/3 mouse mAb(dilution 1:1000).