

# CCDC5 antibody

Catalog Number: 108976

## Product name

CCDC5 antibody

IP: 1:200-1:2000

IHC: 1:20-1:200

## Specificity

Human, Mouse, Rat; other species not tested.

## Antibody description

CCDC5 Rabbit Polyclonal antibody. Positive IHC detected in human pancreas cancer tissue. Positive IP detected in HeLa cells. Positive WB detected in human skeletal muscle tissue, HeLa cells. Observed molecular weight by Western-blot: 40 kDa

## Preparation

This antibody was obtained by immunization of CCDC5 recombinant protein (Accession Number: NM\_138443). Purification method: Antigen affinity purified.

## Formulation

PBS with 0.1% sodium azide and 50% glycerol pH 7.3.

## Storage

Store at -20°C. DO NOT ALIQUOT

## Clonality

Polyclonal

## Ig Type

Rabbit IgG

## Applications

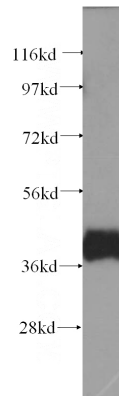
ELISA, WB, IHC, IP

## Dilutions

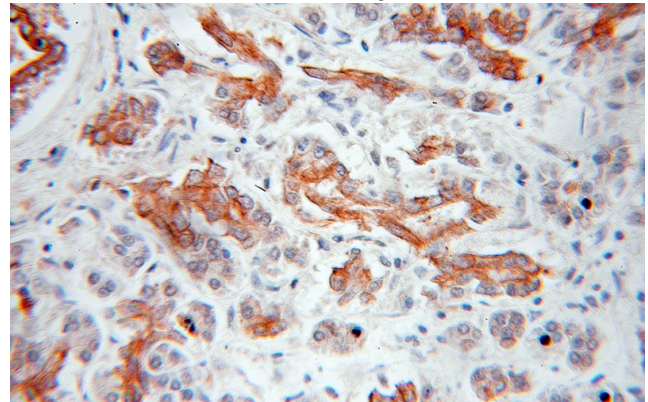
Recommended Dilution:

WB: 1:500-1:5000

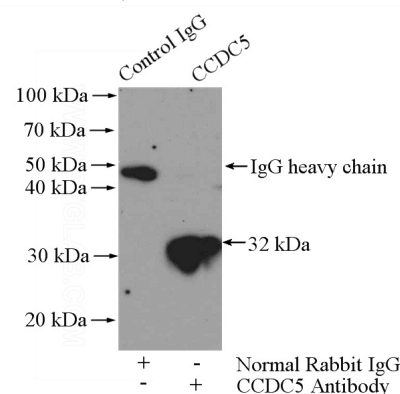
## Validations



human skeletal muscle tissue were subjected to SDS PAGE followed by western blot with Catalog No:108976(CCDC5 antibody) at dilution of 1:500



Immunohistochemical of paraffin-embedded human pancreas cancer using Catalog No:108976(CCDC5 antibody) at dilution of 1:50 (under 10x lens)



IP Result of anti-CCDC5 (IP:Catalog No:108976,

# CCDC5 antibody



Catalog Number: 108976

---

4ug; Detection:Catalog No:108976 1:500) with HeLa cells lysate 1200ug.