

Myogenin Polyclonal Antibody



Catalog Number: 164976

Product name

Myogenin Polyclonal Antibody

Specificity

Human, Mouse, Rat

Antibody description

Polyclonal antibody to Myogenin

Preparation

Antigen: Recombinant fusion protein containing a sequence corresponding to amino acids 1-224 of human Myogenin (NP_002470.2).

Formulation

PBS with 0.02% sodium azide, 50% glycerol, pH7.3.

Storage

Store at -20°C. Avoid freeze / thaw cycles.

Clonality

Polyclonal

Ig Type

Rabbit IgG

Applications

WB, IHC, IF

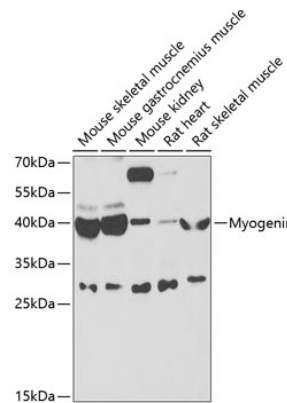
Dilutions

WB 1:500 - 1:2000

IHC 1:50 - 1:200

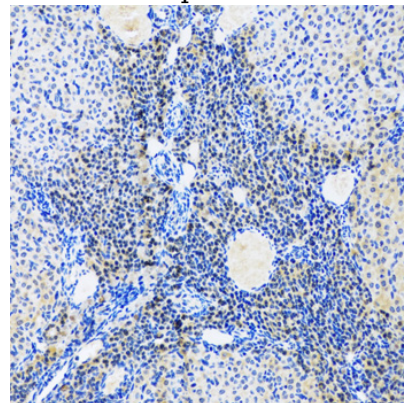
IF 1:50 - 1:200

Validations



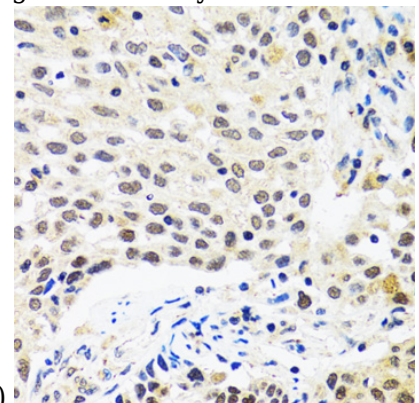
Western blot - Myogenin Polyclonal Antibody

Western blot analysis of extracts of various cell lines, using Myogenin antibody at 1:1000 dilution. Secondary antibody: HRP Goat Anti-Rabbit IgG (H+L) at 1:10000 dilution. Lysates/proteins: 25ug per lane. Blocking buffer: 3% nonfat dry milk in TBST. Detection: ECL Basic Kit. Exposure time: 90s.



Immunohistochemistry - Myogenin Polyclonal Antibody

Immunohistochemistry of paraffin-embedded rat ovary using Myogenin antibody at dilution of



1:100 (20x lens).

Myogenin Polyclonal Antibody



Catalog Number: 164976

Immunohistochemistry - Myogenin Polyclonal Antibody

Immunohistochemistry of paraffin-embedded human lung cancer using Myogenin antibody at dilution of 1:100 (40x lens).