

Anti-FSTL1 antibody



Catalog Number: 141976

Product name

Anti-FSTL1 antibody

Immunogen

[Human FSTL1 \(His Tag\) recombinant protein](#)

Specificity

Rat FSTL1

Antibody description

Rabbit Polyclonal to Rat FSTL1

Preparation

Produced in rabbits immunized with purified, recombinant Rat FSTL1 . FSTL1 specific IgG was purified by Rat FSTL1 affinity chromatography.

Formulation

0.2 µm filtered solution in PBS

Storage

This antibody can be stored at 2°C-8°C for one month without detectable loss of activity. Antibody products are stable for twelve months from date of receipt when stored at -20°C to -80°C.

Preservative-Free.

Sodium azide is recommended to avoid contamination (final concentration 0.05%-0.1%). It is toxic to cells and should be disposed of properly. Avoid repeated freeze-thaw cycles.

Clonality

Polyclonal

Ig Type

Rabbit IgG

Applications

WB, ELISA, IHC-P, IP

Dilutions

WB: 1-5 µg/ml

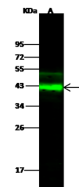
ELISA: 0.1-0.2 µg/ml

This antibody can be used at 0.1-0.2 µg/ml with the appropriate secondary reagents to detect Rat FSTL1.

IHC-P: 0.5-5 µg/mL

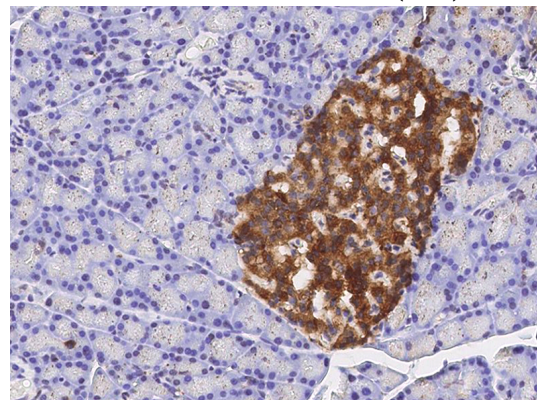
IP: 1-4 µl/mg of lysate

Validations



Items	Lanes	A
Sample (whole cell lysate)		HeLa
Sample Volume (µg/lane)		30
Gel		13% SDS-PAGE reducing gel
Recommended Concentration		1.5 µg/ml
Secondary Antibody		Dylight 800-labeled Antibody to Rabbit IgG (H+L) at 1:5000 dilution.
		Developed using Odyssey imaging system.
Explanation		Predicted band size : 35 kDa Observed band size : 41 kDa Additional bands at : 55 kDa and 36 kDa (We are unsure as to the identity of these extra bands.)

Human FSTL1 Western blot (WB) 14752

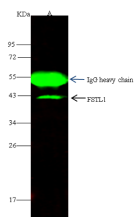


Human FSTL1 Immunohistochemistry(IHC) 14753

Anti-FSTL1 antibody

Catalog Number: 141976

Human FSTL1 Immunoprecipitation(IP) 14754



Lanes	A
Sample (whole cell lysate)	HeLa
Sample quantity	0.5 mg
IP antibody quantity	4 µl
Protein G agarose	15 µl of 50% Protein G agarose
Gel	13% SDS-PAGE reducing gel
Primary antibody	RatFSTL1-His antibody at 10 µg/ml
Secondary antibody	DyLight 800-labeled antibody to rabbit IgG (H+L), at 1:5000 dilution