

## Product name

CROP antibody

WB: 1:200-1:2000

IP: 1:200-1:2000

## Specificity

Human, Mouse; other species not tested.

IHC: 1:20-1:200

IF: 1:50-1:500

## Antibody description

CROP Rabbit Polyclonal antibody. Positive WB detected in Jurkat cells, HepG2 cells, mouse brain tissue. Positive IP detected in HepG2 cells. Positive IF detected in HepG2 cells. Positive IHC detected in human pancreas cancer tissue, human ovary tissue. Observed molecular weight by Western-blot: 55-58 kDa

## Preparation

This antibody was obtained by immunization of CROP recombinant protein (Accession Number: BC056409). Purification method: Antigen affinity purified.

## Formulation

PBS with 0.02% sodium azide and 50% glycerol pH 7.3.

## Storage

Store at -20°C. DO NOT ALIQUOT

## Clonality

Polyclonal

## Ig Type

Rabbit IgG

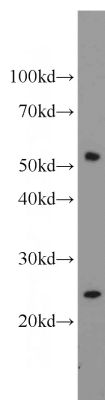
## Applications

ELISA, WB, IHC, IP, IF

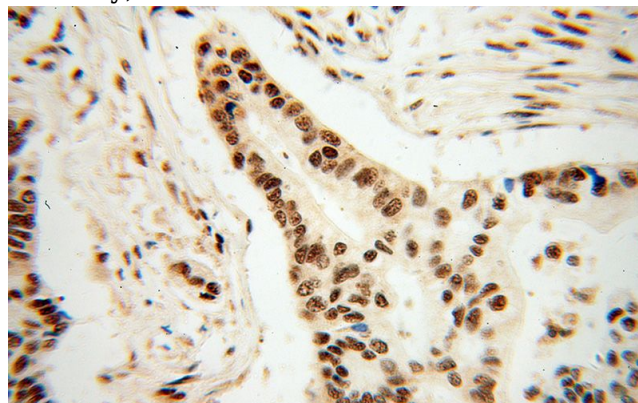
## Dilutions

Recommended Dilution:

## Validations



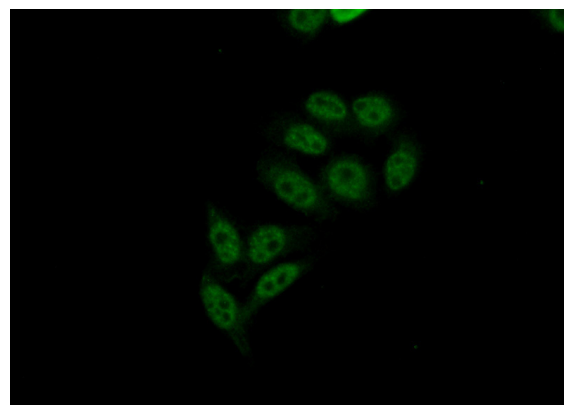
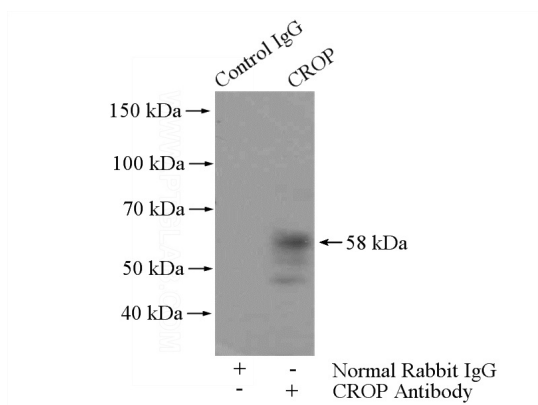
Jurkat cells were subjected to SDS PAGE followed by western blot with Catalog No:109576(CROP antibody) at dilution of 1:600



Immunohistochemical of paraffin-embedded human pancreas cancer using Catalog No:109576(CROP antibody) at dilution of 1:50 (under 40x lens)

# CROP antibody

Catalog Number: 109576



IP Result of anti-CROP (IP:Catalog No:109576, 4ug; Detection:Catalog No:109576 1:500) with HepG2 cells lysate 3600ug.

Immunofluorescent analysis of (10% Formaldehyde) fixed HepG2 cells using Catalog No:109576(CROP Antibody) at dilution of 1:50 and Alexa Fluor 488-conjugated AffiniPure Goat Anti-Rabbit IgG(H+L)