

RCC1 antibody

Catalog Number: 114576

Product name

RCC1 antibody

Specificity

Human, Mouse, Rat; other species not tested.

Antibody description

RCC1 Rabbit Polyclonal antibody. Positive IHC detected in human ovary tumor tissue. Positive WB detected in MCF7 cells, Jurkat cells, mouse testis tissue, Raji cells. Observed molecular weight by Western-blot: 68kd

Preparation

This antibody was obtained by immunization of RCC1 recombinant protein (Accession Number: NM_001381866). Purification method: Antigen affinity purified.

Formulation

PBS with 0.1% sodium azide and 50% glycerol pH 7.3.

Storage

Store at -20°C. DO NOT ALIQUOT

Clonality

Polyclonal

Ig Type

Rabbit IgG

Applications

ELISA, WB, IHC

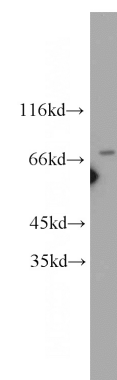
Dilutions

Recommended Dilution:

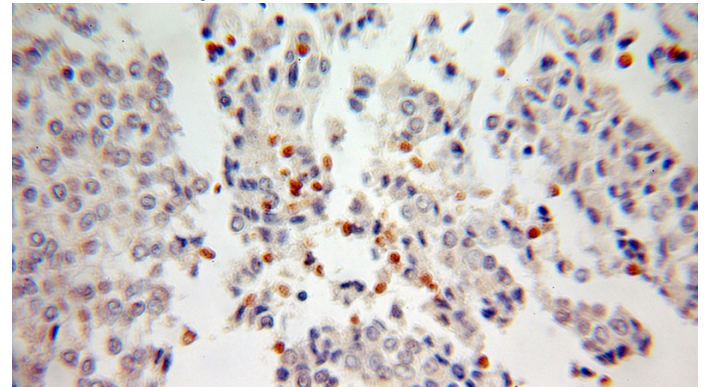
WB: 1:200-1:1000

IHC: 1:20-1:200

Validations



MCF7 cells were subjected to SDS PAGE followed by western blot with Catalog No:114576(SNHG3-RCC1 antibody) at dilution of 1:300



Immunohistochemical of paraffin-embedded human ovary tumor using Catalog No:114576(SNHG3-RCC1 antibody) at dilution of 1:100 (under 10x lens)