

# Alpha-2-antiplasmin antibody



Catalog Number: 107876

## Product name

Alpha-2-antiplasmin antibody

## Specificity

Human, Mouse, Rat; other species not tested.

## Antibody description

Alpha-2-antiplasmin Rabbit Polyclonal antibody. Positive IF detected in HepG2 cells. Positive WB detected in human liver tissue. Observed molecular weight by Western-blot: 55 kDa

## Preparation

This antibody was obtained by immunization of Alpha-2-antiplasmin recombinant protein (Accession Number: NM\_000934). Purification method: Antigen affinity purified.

## Formulation

PBS with 0.02% sodium azide and 50% glycerol pH 7.3.

## Storage

Store at -20°C. DO NOT ALIQUOT

## Clonality

Polyclonal

## Ig Type

Rabbit IgG

## Applications

ELISA, WB, IF

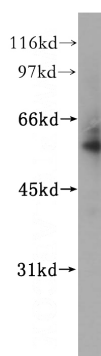
## Dilutions

Recommended Dilution:

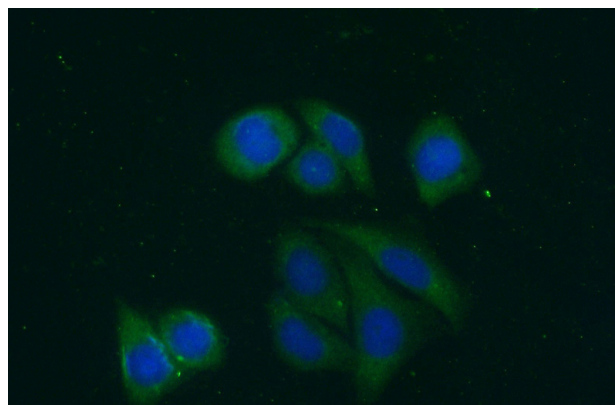
WB: 1:500-1:5000

IF: 1:50-1:500

## Validations



human liver tissue were subjected to SDS PAGE followed by western blot with Catalog No:107876(SERPINF2 antibody) at dilution of 1:500



Immunofluorescent analysis of (-20oc Ethanol) fixed HepG2 cells using Catalog No:107876(SERPINF2 Antibody) at dilution of 1:100 and Alexa Fluor 488-conjugated AffiniPure Goat Anti-Rabbit IgG(H+L)