

Anti-Cyclin H/p34 Rabbit antibody



Catalog Number: 167876

Product name

Anti-Cyclin H/p34 Rabbit antibody

Specificity

Human, Mouse

Antibody description

Cyclin H/p34 Rabbit monoclonal antibody

Preparation

Antigen: A synthetic peptide of human Cyclin H/p34

Formulation

50nM Tris-Glycine(pH 7.4), 0.15M NaCl, 40%Glycerol, 0.01% sodium azide and 0.05% BSA

Storage

Store at 4°C short term. Store at -20°C long term. Avoid freeze / thaw cycle.

Clonality

Monoclonal

Ig Type

Rabbit IgG

Applications

WB, IHC-P, ICC/IF, FC, IP

Dilutions

WB: 1/1000

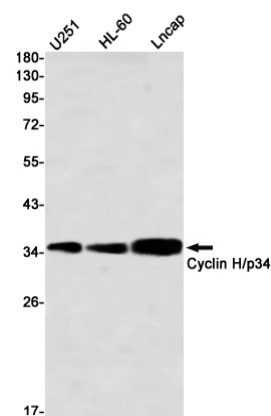
IHC: 1/20

ICC/IF: 1/20

FC: 1/20

IP: 1/20

Validations



Western blot detection of Cyclin H/p34 in U251,HL-60,Lncap using Cyclin H/p34 Rabbit mAb(1:1000 diluted)