

Anti-EGFR/HER1/ErbB1 antibody



Catalog Number: 105876

Product name

Anti-EGFR/HER1/ErbB1 antibody

Immunogen

[Rat EGFR/HER1/ErbB1 \(His Tag\) recombinant protein](#)

Specificity

Rat EGFR / HER1 / ErbB1

Antibody description

Rabbit polyclonal to EGFR/HER1/ErbB1

Preparation

Produced in rabbits immunized with purified, recombinant Rat EGFR / HER1 / ErbB1 (rh EGFR / HER1 / ErbB1; E7CXR8; Met1-Ser646). EGFR / HER1 / ErbB1 specific IgG was purified by Rat EGFR / HER1 / ErbB1 affinity chromatography.

Formulation

0.2 µm filtered solution in PBS

Storage

This antibody can be stored at 2°C-8°C for one month without detectable loss of activity. Antibody products are stable for twelve months from date of receipt when stored at -20°C to -80°C.

Preservative-Free.

Sodium azide is recommended to avoid contamination (final concentration 0.05%-0.1%). It is toxic to cells and should be disposed of properly. Avoid repeated freeze-thaw cycles.

Clonality

Polyclonal

Ig Type

Rabbit IgG

Applications

ELISA, WB, IP

Dilutions

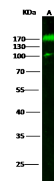
WB: 10-20 µg/ml

ELISA: 0.1-0.2 µg/mL

This antibody can be used at 0.1-0.2 µg/mL with the appropriate secondary reagents to detect Rat EGFR / HER1 / ErbB1. The detection limit for Rat EGFR / HER1 / ErbB1 is 0.00245 ng/well.

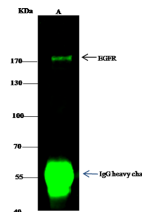
IP: 1-4 µg/mg of lysate

Validations



Items	Lanes	A
Sample (whole cell lysate)		AA31
Sample Volume (µg/lane)		30
Gel		13% SDS-PAGE reducing gel
Recommended Concentration		10-20 µg/ml
Secondary Antibody		Dylight 800 labeled Antibody to Rabbit IgG (E11), at 1:5000 dilution.
Explanation		Developed using Odyssey imaging system. Predicted band size: 170 kDa Observed band size: 170 kDa Additional bands at: 100 kDa (We are unsure as to the identity of these extra bands. They are possible non-specific bindings).

EGFR / HER1 / ErbB1 Antibody, Rabbit PAb, Antigen Affinity Purified, Western blot



Items	Lanes	A
Sample (whole cell lysate)		Hela
Sample quantity		0.5 mg
IP antibody quantity		2 µg
Protein G agarose		15 µl of 50% Protein G Agarose
Gel		13% SDS-PAGE reducing gel
Primary antibody		ratEGFR-His antibody at 15 µg/ml
Secondary antibody		Dylight 800-labeled antibody to rabbit IgG (E11), at 1:5000 dilution

EGFR / HER1 / ErbB1 Antibody, Rabbit PAb, Antigen Affinity Purified, Immunoprecipitation