

BOLA1 antibody



Catalog Number: 108476

Product name

BOLA1 antibody

Recommended Dilution:

WB: 1:500-1:5000

Specificity

Human, Mouse, Rat; other species not tested.

IP: 1:200-1:2000

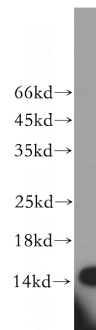
IHC: 1:20-1:200

Antibody description

BOLA1 Rabbit Polyclonal antibody. Positive IF detected in HepG2 cells. Positive IHC detected in human lung tissue, human heart tissue, human kidney tissue, human placenta tissue, human spleen tissue. Positive IP detected in HepG2 cells. Positive WB detected in HepG2 cells, HEK-293 cells. Observed molecular weight by Western-blot: 14 kDa

IF: 1:20-1:200

Validations



Preparation

This antibody was obtained by immunization of BOLA1 recombinant protein (Accession Number: NM_016074). Purification method: Antigen affinity purified.

HepG2 cells were subjected to SDS PAGE followed by western blot with Catalog No:117211(BOLA1 antibody) at dilution of 1:800

Formulation

PBS with 0.02% sodium azide and 50% glycerol pH 7.3.

Storage

Store at -20°C. DO NOT ALIQUOT

Clonality

Polyclonal

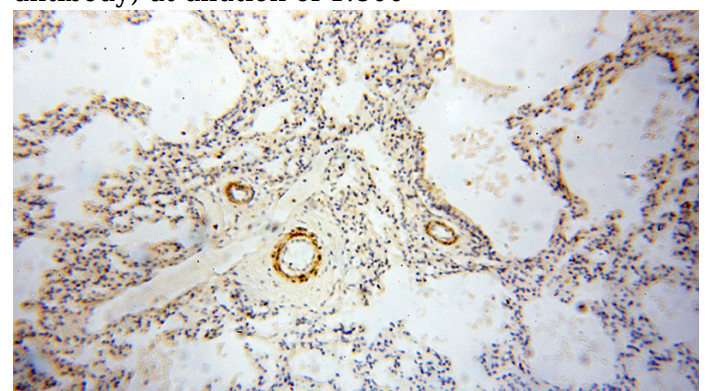
Ig Type

Rabbit IgG

Applications

ELISA, WB, IHC, IF, IP

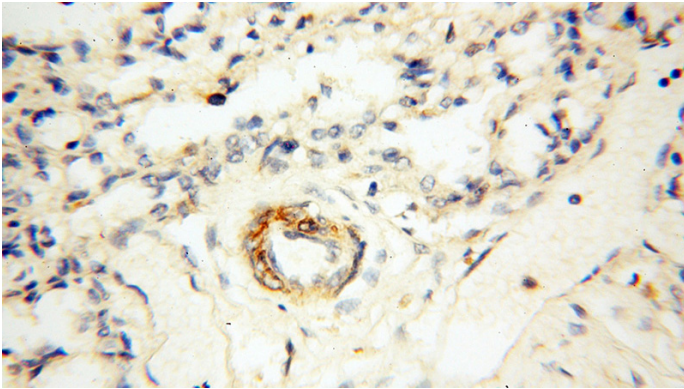
Dilutions



Immunohistochemical of paraffin-embedded human lung using Catalog No:117211(BOLA1 antibody) at dilution of 1:100 (under 10x lens)

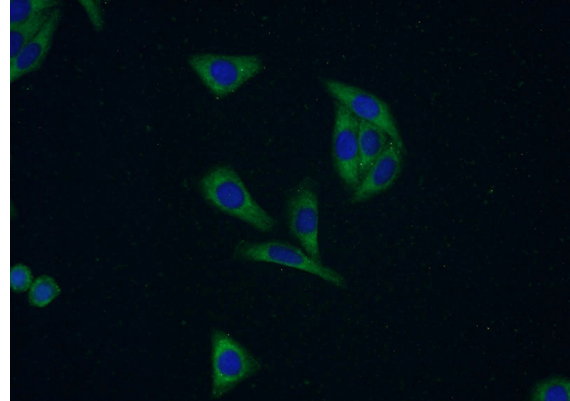
BOLA1 antibody

Catalog Number: 108476



Immunohistochemical of paraffin-embedded human lung using Catalog No:117211(BOLA1 antibody) at dilution of 1:100 (under 40x lens)

IP Result of anti-BOLA1 (IP:Catalog No:117211, 4ug; Detection:Catalog No:117211 1:800) with HepG2 cells lysate 3480ug.



Immunofluorescent analysis of HepG2 cells using Catalog No:117211(BOLA1 Antibody) at dilution of 1:50 and Alexa Fluor 488-conjugated AffiniPure Goat Anti-Rabbit IgG(H+L)

