

## General Information

### Gene Name Synonym

TGF-beta type II receptor; Transforming growth factor-beta receptor type II

### Protein Construction

A DNA sequence encoding the rhesus TGFBR2 (NP\_001248080.1) (Met1-Arg159) was expressed with the Fc region of human IgG1 at the C-terminus.

### Organism

Rhesus

### Expression Host

Human Cells

## QC Testing

### Activity

1. Measured by its binding ability in a functional ELISA.
  2. Immobilized Rhesus TGFBR2-His (Cat:504900) at 10 µg/mL (100 µL/well) can bind Rhesus TGFBR2-Fc.
- The EC<sub>50</sub> of Rhesus TGFBR2-Fc is 28-56 ng/mL.

### Purity

> 95 % as determined by SDS-PAGE

### Endotoxin

< 1.0 EU per µg of the protein as determined by the LAL method

### Stability

Samples are stable for up to twelve months from date of receipt at -70°C

### Predicted N terminal

Ile 24

### Molecular Mass

The recombinant rhesus TGFBR2 comprises 377 amino acids and has a calculated molecular mass of 42.4 KDa.

### Formulation

- Lyophilized from sterile PBS, pH 7.4
1. 5 % trehalose and mannitol are added as protectants before lyophilization.
  2. Please contact us for any concerns or special requirements.

## Usage Guide

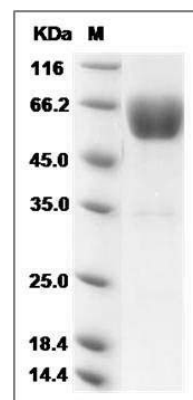
### Storage

Store it under sterile conditions at -20°C to -80°C. It is recommended that the protein be aliquoted for optimal storage. Avoid repeated freeze-thaw cycles.

### Reconstitution

Adding sterile water, prepare a stock solution of 0.25 mg/ml. Concentration is measured by UV-Vis.

### SDS-PAGE



Cynomolgus TGFBR2 Protein (Fc Tag) SDS-PAGE