

# Anti-p44/42 MAPK (ERK1/2) Rabbit antibody



Catalog Number: 169076

## Product name

Anti-p44/42 MAPK (ERK1/2) Rabbit antibody

## Specificity

Human, Mouse, Rat

## Antibody description

p44/42 MAPK (ERK1/2) Rabbit polyclonal antibody

## Preparation

Antigen: A synthesized peptide derived from human ERK1/2

## Formulation

Rabbit IgG in phosphate buffered saline , pH 7.4, 150mM NaCl, 0.02% sodium azide and 50% glycerol.

## Storage

Store at 4°C short term. Store at -20°C long term. Avoid freeze / thaw cycle.

## Clonality

Polyclonal

## Ig Type

Rabbit IgG

## Applications

WB, ICC/IF, IP, FC

## Dilutions

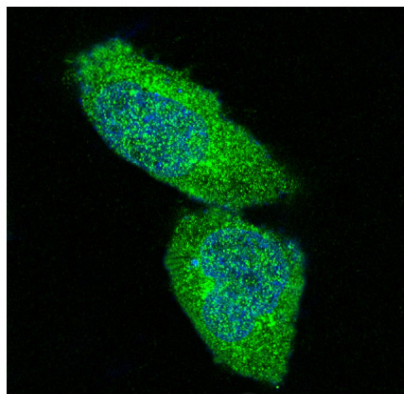
WB: 1/500-1/2000

ICC/IF: 1/50-1/200

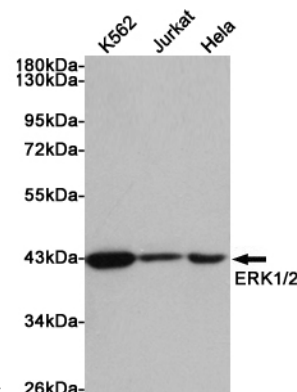
IP: 1/50

FC: 1/200

## Validations

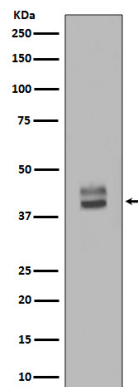


Immunofluorescent analysis of HeLa cells, using



ERK1/2 Antibody.

Western blot analysis of extracts from K562, Jurkat and HeLa cells using p44/42 MAPK (ERK1/2) Rabbit pAb at 1:1000 dilution. Predicted band size: 42/44kDa. Observed band size: 42kDa.



Western blot analysis of ERK1/2 Antibody expression in HepG2 whole cell lysates.