

# Laprituximab reference antibody



Catalog Number: 177076

## Product name

Laprituximab reference antibody

## Specificity

Human ERBB1 / EGFR / HER1

## Antibody description

Anti-ERBB1 / EGFR / HER1 Antibody  
(Laprituximab)

## Preparation

Recombinant expression and purified from CHO cells.

## Formulation

0.1 M Pro-Ac, 20 mM Arg, pH 5.0

## Storage

-80°C for 2 years under sterile conditions; -20°C for 1 year under sterile conditions; Avoid repeated freeze-thaw cycles.

## Clonality

Monoclonal

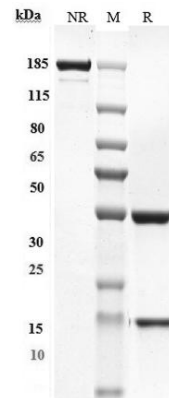
## Ig Type

IgG1

## Applications

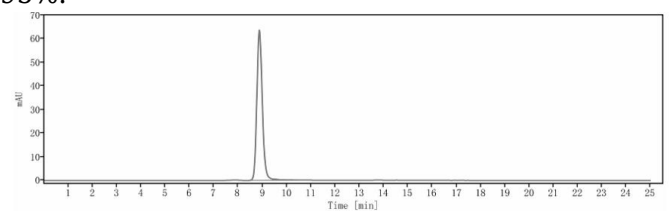
ELISA

## Validations



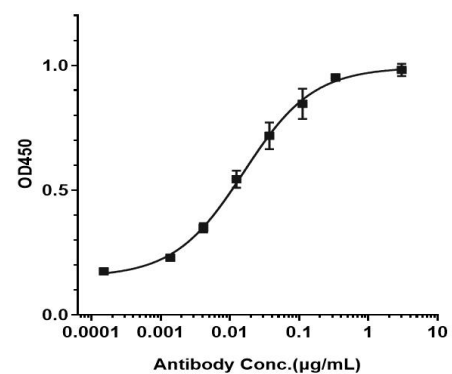
## SDS-PAGE

Anti-ERBB1 / EGFR / HER1 Antibody (laprituximAb) on SDS-PAGE under reducing (R) condition. The purity of the protein is greater than 95%.



## SEC-HPLC

The purity of Anti-ERBB1 / EGFR / HER1 Antibody (laprituximAb) is 98.97%, determined by SEC-



## HPLC.

Bioactivity: ELISA

Immobilized human EGFR His at 2 µg/mL can bind Anti-ERBB1 / EGFR / HER1 Antibody (laprituximAb), EC50=0.01573 µg/mL.