

# Anti-BACE1 antibody

Catalog Number: 104076

## Product name

Anti-BACE1 antibody

## Immunogen

[Human BACE1 recombinant protein](#)

## Specificity

Human BACE1 / ASP2

**Has cross-reactivity** in ELISA with Mouse BACE1; Human ADAM15

## Antibody description

Rabbit monoclonal to BACE1

## Preparation

This antibody was obtained from a rabbit immunized with purified, recombinant Human BACE1 / ASP2 (rh BACE1 / ASP2; NP\_036236.1; Met 1-Thr 457) and conjugated with FITC under optimum conditions, the unreacted FITC was removed.

## Formulation

Aqueous solution containing 0.5% BSA and 0.09% sodium azide

## Storage

This antibody is stable for 12 months from date of receipt when stored at 2°C-8°C. Protected from prolonged exposure to light. Do not freeze ! Sodium azide is toxic to cells and should be disposed of properly. Flush with large volumes of water during disposal.

## Clonality

Monoclonal

## Ig Type

Rabbit IgG

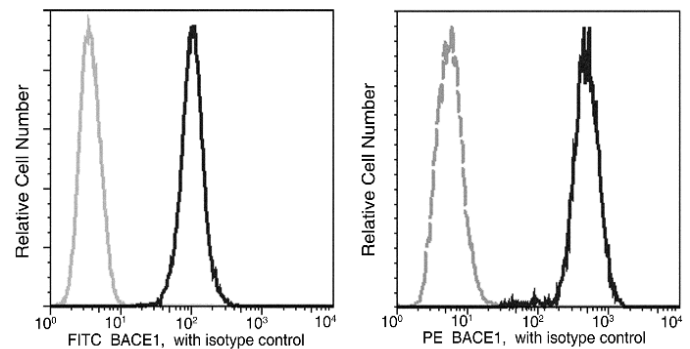
## Applications

FCM

## Dilutions

FCM

## Validations



BACE1 / ASP2 Antibody (FITC), Rabbit MAb, Flow cytometric

Flow cytometric analysis of Human BACE1 expression in Jurkat cells. The cells were treated according to manufacturer's manual (BD Pharmingen™ Cat. No. 554714), and then stained with FITC Rabbit anti-BACE1 (10064-R027-F). The fluorescence histograms were derived from gated events with the forward and side light-scatter characteristics of intact cells.