

DMXL2 antibody

Catalog Number: 110076

Product name

DMXL2 antibody

Specificity

Human, Mouse, Rat; other species not tested.

Antibody description

DMXL2 Rabbit Polyclonal antibody. Positive WB detected in mouse brain tissue. Positive IHC detected in human cerebellum tissue, human kidney tissue. Observed molecular weight by Western-blot: 340 kDa

Preparation

This antibody was obtained by immunization of DMXL2 recombinant protein (Accession Number: NM_001174117). Purification method: Antigen affinity purified.

Formulation

PBS with 0.1% sodium azide and 50% glycerol pH 7.3.

Storage

Store at -20°C. DO NOT ALIQUOT

Clonality

Polyclonal

Ig Type

Rabbit IgG

Applications

ELISA, WB, IHC

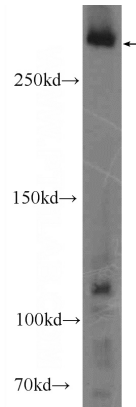
Dilutions

Recommended Dilution:

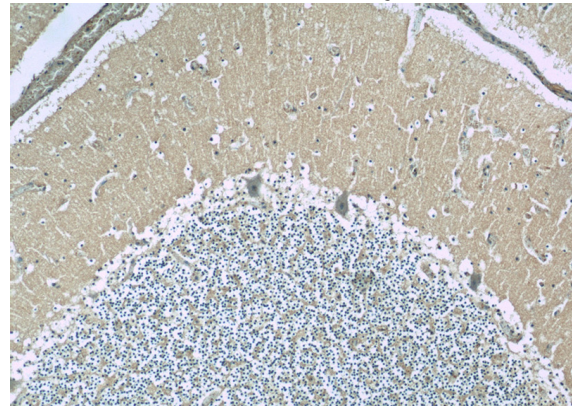
WB: 1:200-1:1000

IHC: 1:20-1:200

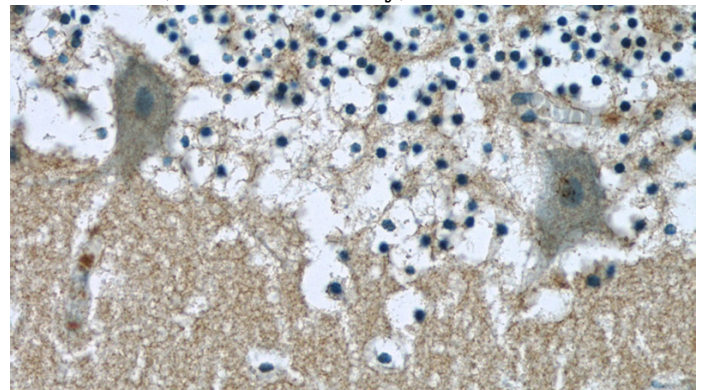
Validations



mouse brain tissue were subjected to SDS PAGE followed by western blot with Catalog No:110076(DMXL2 Antibody) at dilution of 1:200



Immunohistochemistry of paraffin-embedded human cerebellum slide using Catalog No:110076(DMXL2 Antibody) at dilution of 1:50



Immunohistochemistry of paraffin-embedded human cerebellum slide using Catalog No:110076(DMXL2 Antibody) at dilution of 1:50