

Anti-WDR1 Rabbit antibody



Catalog Number: 168766

Product name

Anti-WDR1 Rabbit antibody

Specificity

Human, Mouse, Rat

Antibody description

WDR1 Rabbit monoclonal antibody

Preparation

Antigen: A synthetic peptide of human WDR1

Formulation

50nM Tris-Glycine(pH 7.4), 0.15M NaCl, 40%Glycerol, 0.01% sodium azide and 0.05% BSA.

Storage

Store at 4°C short term. Store at -20°C long term. Avoid freeze / thaw cycle.

Clonality

Monoclonal

Ig Type

Rabbit IgG

Applications

WB, IHC-P, ICC/IF

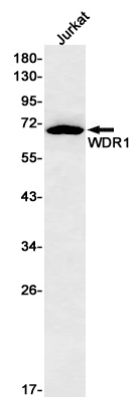
Dilutions

WB: 1/1000-1/5000

IHC: 1/20-1/50

ICC/IF: 1/20-1/50

Validations



Western blot detection of WDR1 in Jurkat cell lysates using WDR1 Rabbit mAb(1:500 diluted).Predicted band size:66kDa.Observed band size:66kDa.