

Human LSD1 (His & GST Tag) recombinant protein



Catalog Number: 502766

General Information

Gene Name Synonym

BRAF35-HDAC complex protein BHC110; Flavin-containing amine oxidase domain-containing protein 2

Protein Construction

A DNA sequence encoding the human KDM1 (O60341-1) (Ser172-Met852) was fused with the N-terminal poly histidine-tagged GST tag at the N-terminus.

Organism

Human

Expression Host

Baculovirus-Insect Cells

QC Testing

Purity

> 90 % as determined by SDS-PAGE

Endotoxin

< 1.0 EU per μg of the protein as determined by the LAL method

Stability

Samples are stable for up to twelve months from date of receipt at -70°C

Predicted N terminal

Met

Molecular Mass

The recombinant human KDM1 /GST chimera consists of 917 amino acids and has a calculated molecular mass of 103.3 kDa. The recombinant protein migrates as an approximately 93 kDa band in SDS-PAGE under reducing conditions.

Formulation

Lyophilized from sterile 20mM Tris, 500mM NaCl, 2mM DTT, pH 8.0, 10% gly

1. 5 % trehalose and mannitol are added as protectants before lyophilization.

2. Please contact us for any concerns or special requirements.

Usage Guide

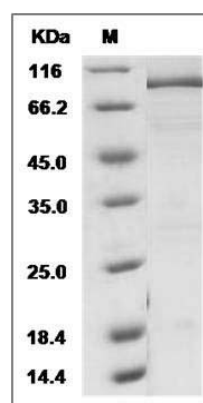
Storage

Store it under sterile conditions at -20°C to -80°C . It is recommended that the protein be aliquoted for optimal storage. Avoid repeated freeze-thaw cycles.

Reconstitution

Adding sterile water, prepare a stock solution of 0.25 mg/ml. Concentration is measured by UV-Vis.

SDS-PAGE



Human KDM1 / LSD1 Protein (His & GST Tag)
SDS-PAGE