

Cofilin 2 antibody

Catalog Number: 109366

Product name

Cofilin 2 antibody

Specificity

Human, Mouse, Rat; other species not tested.

Antibody description

Cofilin 2 Rabbit Polyclonal antibody. Positive WB detected in human liver tissue, L02 cells, mouse liver tissue, mouse lung tissue, mouse skeletal muscle tissue. Positive IHC detected in human skeletal muscle tissue, human gliomas tissue, human heart tissue. Positive IF detected in L02 cells. Observed molecular weight by Western-blot: 19 kDa

Preparation

This antibody was obtained by immunization of Cofilin 2 recombinant protein (Accession Number: NM_021914). Purification method: Antigen affinity purified.

Formulation

PBS with 0.1% sodium azide and 50% glycerol pH 7.3.

Storage

Store at -20°C. DO NOT ALIQUOT

Clonality

Polyclonal

Ig Type

Rabbit IgG

Applications

ELISA, WB, IHC, IF

Dilutions

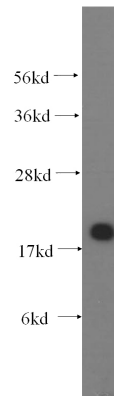
Recommended Dilution:

WB: 1:500-1:5000

IHC: 1:20-1:200

IF: 1:20-1:200

Validations



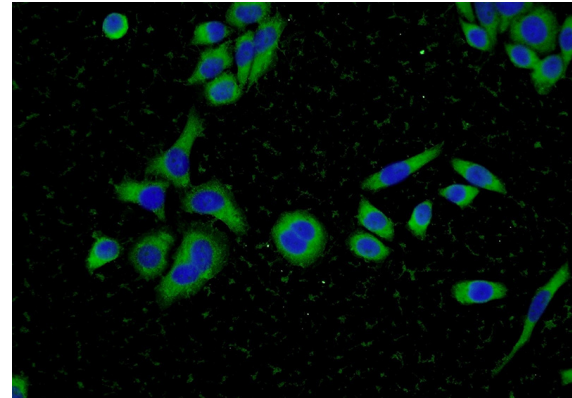
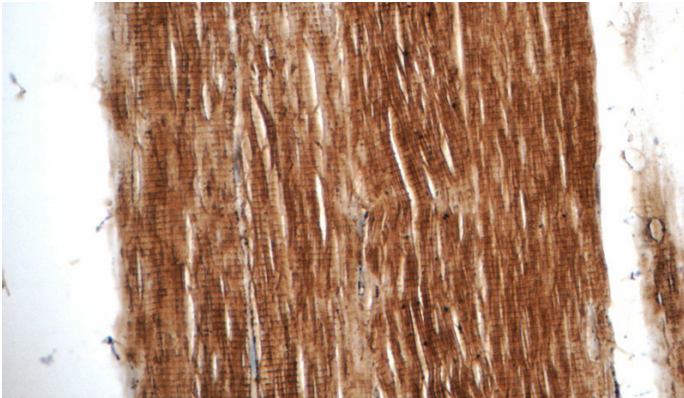
human liver tissue were subjected to SDS PAGE followed by western blot with Catalog No:109366(CFL2 antibody) at dilution of 1:400



Immunohistochemistry of paraffin-embedded human skeletal muscle tissue slide using Catalog No:109366(CFL2 Antibody) at dilution of 1:50 (under 10x lens)

Cofilin 2 antibody

Catalog Number: 109366



Immunohistochemistry of paraffin-embedded human skeletal muscle tissue slide using Catalog No:109366(CFL2 Antibody) at dilution of 1:50 (under 40x lens)

Immunofluorescent analysis of L02 cells using Catalog No:109366(CFL2 Antibody) at dilution of 1:50 and Alexa Fluor 488-conjugated AffiniPure Goat Anti-Rabbit IgG(H+L)