

KRAS antibody

Catalog Number: 107366

Product name

KRAS antibody

Specificity

Human; other species not tested.

Antibody description

KRAS Mouse Monoclonal antibody. Positive FC detected in HeLa cells. Positive IHC detected in human lung cancer tissue, human colon cancer tissue. Positive WB detected in HeLa cells. Observed molecular weight by Western-blot: 21 kDa

Preparation

This antibody was obtained by immunization of KRAS recombinant protein (Accession Number: XM_011520653). Purification method: Protein G purified.

Formulation

PBS with 0.02% sodium azide and 50% glycerol pH 7.3.

Storage

Store at -20°C. DO NOT ALIQUOT

Clonality

Monoclonal

Ig Type

Mouse IgG1

Applications

ELISA, WB, IHC, FC

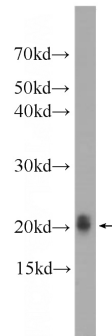
Dilutions

Recommended Dilution:

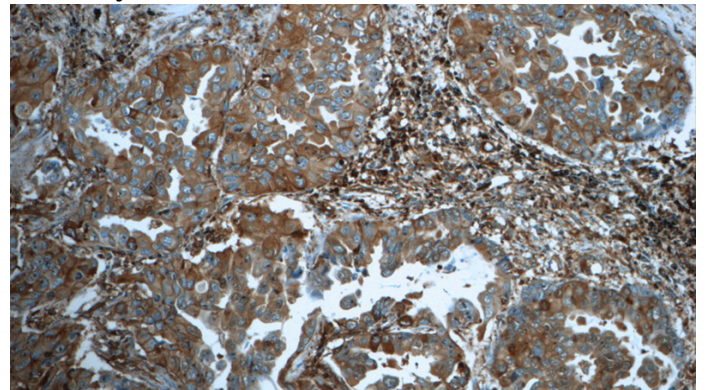
WB: 1:500-1:5000

IHC: 1:20-1:200

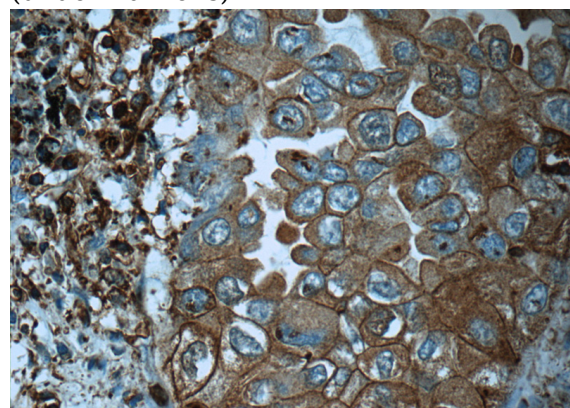
Validations



HeLa cells were subjected to SDS PAGE followed by western blot with Catalog No:107366(KRAS Antibody) at dilution of 1:1000



Immunohistochemistry of paraffin-embedded human lung cancer tissue slide using Catalog No:107366(KRAS Antibody) at dilution of 1:50 (under 10x lens)



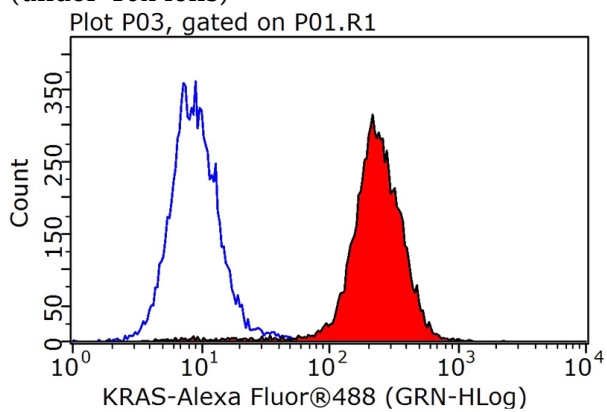
Immunohistochemistry of paraffin-embedded human lung cancer tissue slide using Catalog No:107366(KRAS Antibody) at dilution of 1:50

KRAS antibody



Catalog Number: 107366

(under 40x lens)



1X10⁶ HeLa cells were stained with 0.2ug KRAS antibody (Catalog No:107366, red) and control antibody (blue). Fixed with 90% MeOH blocked with 3% BSA (30 min). Alexa Fluor 488-conjugated AffiniPure Goat Anti-Mouse IgG(H+L) with dilution 1:1000.