

Anti-KLK8/Kallikrein 8 antibody



Catalog Number: 101366

Product name

Anti-KLK8/Kallikrein 8 antibody

Immunogen

[Human KLK8/Kallikrein 8 \(His Tag\) recombinant protein](#)

Specificity

Human KLK8 / Kallikrein 8

Antibody description

Rabbit monoclonal to KLK8/Kallikrein 8

Preparation

This antibody was obtained from a rabbit immunized with purified, recombinant Human KLK8 / Kallikrein 8 (rh KLK8 / Kallikrein 8; O60259-1; Met1-Gly260).

Formulation

0.2 µm filtered solution in PBS

Storage

This antibody can be stored at 2°C-8°C for one month without detectable loss of activity. Antibody products are stable for twelve months from date of receipt when stored at -20°C to -80°C. Preservative-Free.

Sodium azide is recommended to avoid contamination (final concentration 0.05%-0.1%). It is toxic to cells and should be disposed of properly. Avoid repeated freeze-thaw cycles.

Clonality

Monoclonal

Ig Type

Rabbit IgG

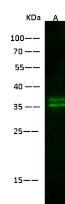
Applications

WB

Dilutions

WB: 5-10 µg/ml

Validations



Items	Lanes
Sample (vehicle cell lysate)	A
Sample Volume (µg/lane)	A431 30
Gel	13% SDS-PAGE reducing gel
Recommended Concentration	10-20 µg/ml
Secondary Antibody	DyLight 800 labeled Antibody To Rabbit IgG (H+L), at 1:5000 dilution.
Developed using Odyssey imaging system.	
Explanation	Predicted band size : 28 kDa Observed band size : 35 kDa

KLK8 / Kallikrein 8 Antibody, Rabbit MAb, Western blot