

# Anti-LMNB1 antibody



Catalog Number: 141366

## Product name

Anti-LMNB1 antibody

## Specificity

Human LMNB1

## Antibody description

Rabbit Polyclonal to Human LMNB1

## Preparation

Produced in rabbits immunized with a synthetic peptide corresponding to the N-terminus of the Human LMNB1, and purified by antigen affinity chromatography.

## Formulation

0.2 µm filtered solution in PBS

## Storage

This antibody can be stored at 2°C-8°C for one month without detectable loss of activity. Antibody products are stable for twelve months from date of receipt when stored at -20°C to -80°C.

Preservative-Free.

Sodium azide is recommended to avoid contamination (final concentration 0.05%-0.1%). It is toxic to cells and should be disposed of

properly. Avoid repeated freeze-thaw cycles.

## Clonality

Polyclonal

## Ig Type

Rabbit IgG

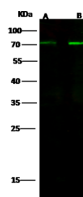
## Applications

WB

## Dilutions

WB: 5-20 µg/ml

## Validations



Items	Lanes	A	B
Sample (whole cell lysate)		Jurkat	Molt4
Sample Volume (µg/lane)		30	30
Gel	13% SDS-PAGE reducing gel		
Recommended Concentration	5-20 µg/ml		
Secondary Antibody	Dylight 800 Labeled Antibody to Rabbit IgG (H+), at 1:5000 dilution.		
Developed using Odyssey imaging system.			
Explanation	Predicted band size : 66 kDa Observed band size : 70 kDa		

LMNB1 Antibody, Rabbit PAb, Antigen Affinity Purified, Western blot