

ERMAP antibody

Catalog Number: 110366

Product name

ERMAP antibody

IP: 1:200-1:1000

IF: 1:50-1:500

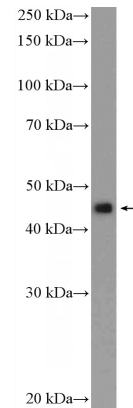
Specificity

Human; other species not tested.

Validations

Antibody description

ERMAP Rabbit Polyclonal antibody. Positive IP detected in MCF-7 cells. Positive WB detected in MCF-7 cells. Positive IF detected in MCF-7 cells. Observed molecular weight by Western-blot: 53 kDa



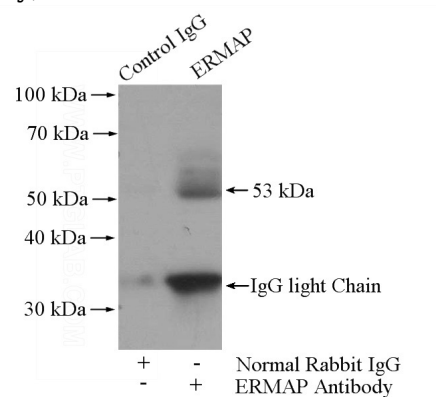
Preparation

This antibody was obtained by immunization of ERMAP recombinant protein (Accession Number: NM_018538). Purification method: Antigen affinity purified.

MCF-7 cells were subjected to SDS PAGE followed by western blot with Catalog No:110366(ERMAP Antibody) at dilution of 1:300

Formulation

PBS with 0.1% sodium azide and 50% glycerol pH 7.3.



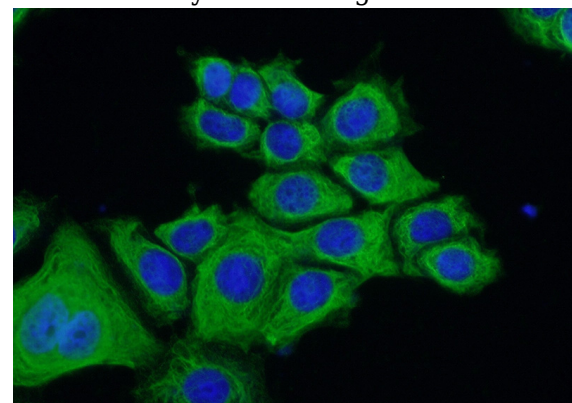
Storage

Store at -20°C. DO NOT ALIQUOT

IP Result of anti-ERMAP (IP:Catalog No:110366, 4ug; Detection:Catalog No:110366 1:300) with MCF-7 cells lysate 1600ug.

Clonality

Polyclonal



Ig Type

Rabbit IgG

Applications

ELISA, WB, IP, IF

Dilutions

Recommended Dilution:

WB: 1:200-1:1000

Immunofluorescent analysis of (-20oc Ethanol) fixed MCF-7 cells using Catalog

ERMAP antibody



Catalog Number: 110366

No:110366(ERMAP Antibody) at dilution of 1:50

and Alexa Fluor 488-conjugated AffiniPure Goat
Anti-Rabbit IgG(H+L)