

# Cyclin E2 antibody



Catalog Number: 109666

## Product name

Cyclin E2 antibody

IHC: 1:20-1:200

IF: 1:20-1:200

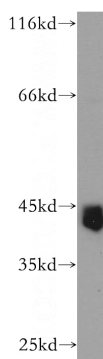
## Specificity

Human; other species not tested.

## Validations

## Antibody description

Cyclin E2 Rabbit Polyclonal antibody. Positive FC detected in HeLa cells. Positive IF detected in HeLa cells. Positive IHC detected in human testis tissue, human breast cancer tissue. Positive WB detected in Jurkat cells. Observed molecular weight by Western-blot: 44 kDa



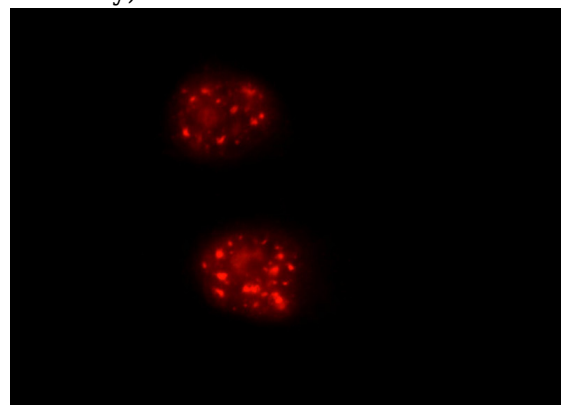
## Preparation

This antibody was obtained by immunization of Cyclin E2 recombinant protein (Accession Number: BC020729). Purification method: Antigen affinity purified.

Jurkat cells were subjected to SDS PAGE followed by western blot with Catalog No:109666(CCNE2 antibody) at dilution of 1:800

## Formulation

PBS with 0.1% sodium azide and 50% glycerol pH 7.3.



## Storage

Store at -20°C. DO NOT ALIQUOT

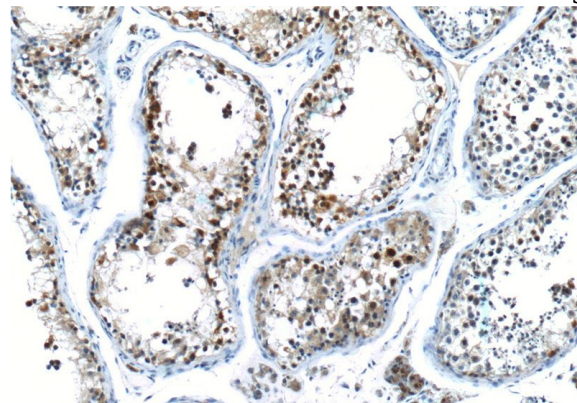
## Clonality

Polyclonal

Immunofluorescent analysis of HeLa cells using Catalog No:109666(CCNE2 Antibody) at dilution of 1:50 and Rhodamine-Goat anti-Rabbit IgG

## Ig Type

Rabbit IgG



## Applications

ELISA, WB, IF, FC, IHC

## Dilutions

Recommended Dilution:

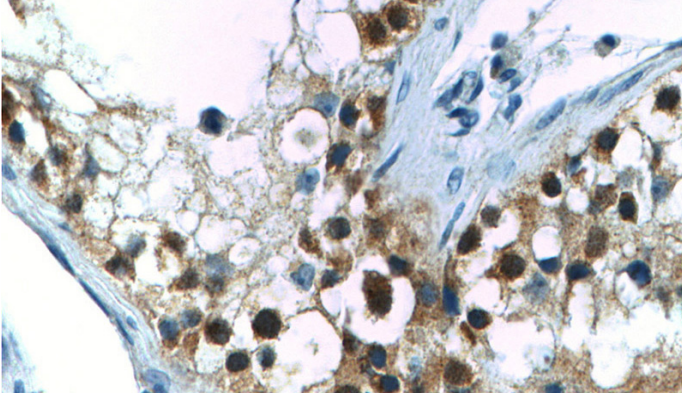
WB: 1:500-1:5000

Immunohistochemistry of paraffin-embedded human testis tissue slide using Catalog

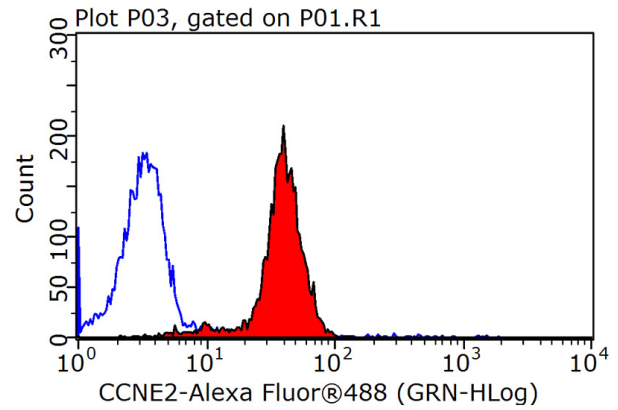
# Cyclin E2 antibody

Catalog Number: 109666

No:109666(CCNE2 Antibody) at dilution of 1:50  
(under 10x lens).



Immunohistochemistry of paraffin-embedded  
human testis tissue slide using Catalog  
No:109666(CCNE2 Antibody) at dilution of 1:50  
(under 40x lens).



1X10<sup>6</sup> HeLa cells were stained with 0.2ug  
CCNE2 antibody (Catalog No:109666, red) and  
control antibody (blue). Fixed with 90% MeOH  
blocked with 3% BSA (30 min). Alexa Fluor 488-  
conjugated AffiniPure Goat Anti-Rabbit IgG(H+L)  
with dilution 1:1500.