

Anti-Phospho-p70 S6 Kinase beta/SRK (Ser371) Rabbit antibody



Catalog Number: 168666

Product name

Monoclonal

Anti-Phospho-p70 S6 Kinase beta/SRK (Ser371)
Rabbit antibody

Ig Type

Rabbit IgG

Specificity

Human, Mouse, Rat

Applications

WB

Antibody description

Phospho-p70 S6 Kinase beta/SRK (Ser371) Rabbit
monoclonal antibody

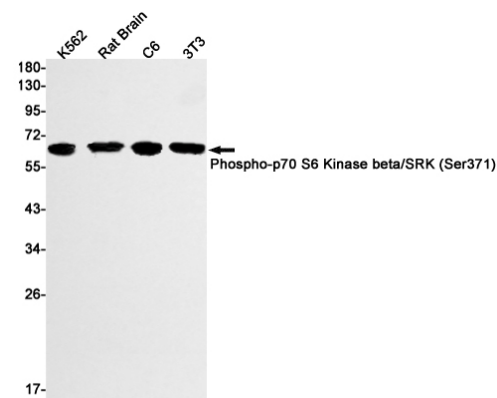
Dilutions

1:1000

Preparation

Antigen: A synthetic phosphopeptide
corresponding to residues surrounding Ser371 of
human P70 S6 Kinase beta

Validations



Formulation

Supplied in 50nM Tris-Glycine(pH 7.4), 0.15M
NaCl, 40%Glycerol, 0.01% sodium azide and
0.05% BSA.

Storage

Store at 4°C short term. Aliquot and store at -20°C
long term. Avoid freeze / thaw cycle.

Clonality

Western blot detection of Phospho-p70 S6 Kinase
beta/SRK (Ser371) in K562,Rat Brain,C6,3T3 cell
lysates using Phospho-p70 S6 Kinase beta/SRK
(Ser371) Rabbit mAb(1:1000 diluted).Predicted
band size:54kDa.Observed band size:60kDa.