

# Anti-CDK1 Rabbit antibody



Catalog Number: 166666

## Product name

Anti-CDK1 Rabbit antibody

## Specificity

Human, Mouse, Monkey, Rat

## Antibody description

CDK1 Rabbit polyclonal antibody

## Preparation

Antigen: Peptide sequence around aa. 13~17 (G-T-Y-G-V) derived from human CDK1.

## Formulation

Supplied at 1.0mg/mL in phosphate buffered saline (without Mg<sup>2+</sup> and Ca<sup>2+</sup>), pH 7.4, 150mM NaCl, 0.02% sodium azide and 50% glycerol.

## Storage

Store at 4°C short term. Store at -20°C long term. Avoid freeze / thaw cycle.

## Clonality

Polyclonal

## Ig Type

Rabbit IgG

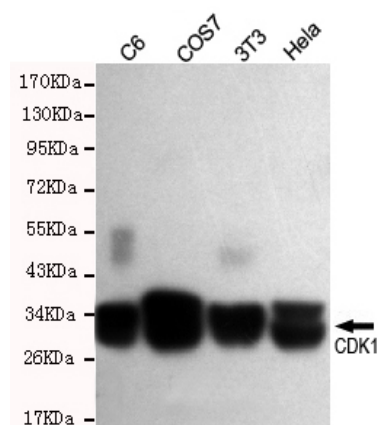
## Applications

WB

## Dilutions

WB:1/300

## Validations



Western blot detection of CDK1 in C6, COS7, 3T3 and HeLa cell lysates using CDK1 rabbit pAb (dilution 1:300). Predicted band size: 34KDa. Observed band size: 34KDa.