

# PDE6B antibody



Catalog Number: 113666

## Product name

PDE6B antibody

WB: 1:500-1:5000

IP: 1:500-1:5000

## Immunogen

[Human PDE6B Recombinant protein \(GST tag\)](#)

## Specificity

Human, Mouse; other species not tested.

## Antibody description

PDE6B Rabbit Polyclonal antibody. Positive WB detected in mouse eye tissue, A549 cells. Positive IP detected in Y79 cells. Observed molecular weight by Western-blot: 98 kDa

## Preparation

This antibody was obtained by immunization of PDE6B recombinant protein (Accession Number: NM\_001145291). Purification method: Antigen affinity purified.

## Formulation

PBS with 0.02% sodium azide and 50% glycerol pH 7.3.

## Storage

Store at -20°C. DO NOT ALIQUOT

## Clonality

Polyclonal

## Ig Type

Rabbit IgG

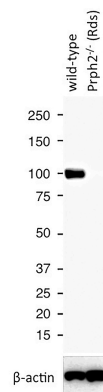
## Applications

ELISA, WB, IP

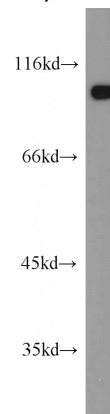
## Dilutions

Recommended Dilution:

## Validations

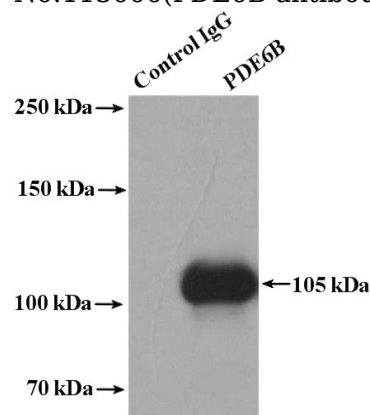


WB results of PDE6B antibody (Catalog No:113666) with WT mouse Eye and Prph2 (Rds) mutant mouse Eye (Negative control). Courtesy of Seongjin Seo, PhD, University of Iowa College of



Medicine.

mouse eye tissue were subjected to SDS PAGE followed by western blot with Catalog No:113666(PDE6B antibody) at dilution of 1:1000



# PDE6B antibody



Catalog Number: 113666

---

IP Result of anti-PDE6B (IP:Catalog No:113666,

4ug; Detection:Catalog No:113666 1:1000) with  
Y79 cells lysate 2000ug.