

FIP1L1 antibody

Catalog Number: 110666

Product name

FIP1L1 antibody

IHC: 1:20-1:200

IF: 1:10-1:100

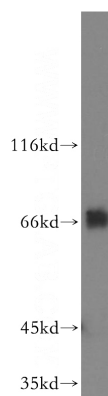
Specificity

human, mouse, rat; other species not tested.

Validations

Antibody description

FIP1L1 Rabbit Polyclonal antibody. Positive WB detected in K-562 cells. Positive IF detected in MCF-7. Positive IHC detected in human ovary tumor. Observed molecular weight by Western-blot: 67kd



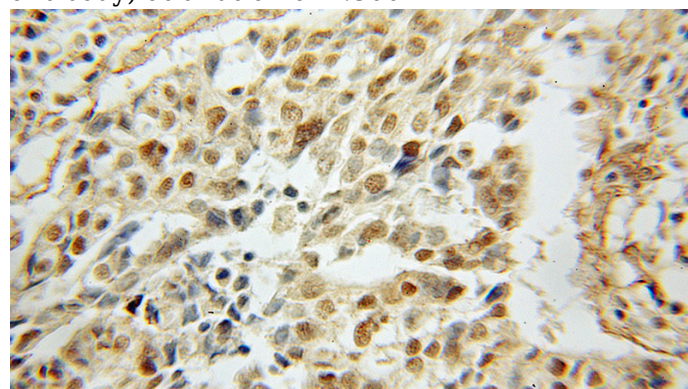
Preparation

This antibody was obtained by immunization of FIP1L1 recombinant protein (Accession Number: BC017724). Purification method: Antigen affinity purified.

K-562 cells were subjected to SDS PAGE followed by western blot with Catalog No:110666(FIP1L1 antibody) at dilution of 1:300

Formulation

PBS with 0.02% sodium azide and 50% glycerol pH 7.3.



Storage

Store at -20°C. DO NOT ALIQUOT

Clonality

Polyclonal

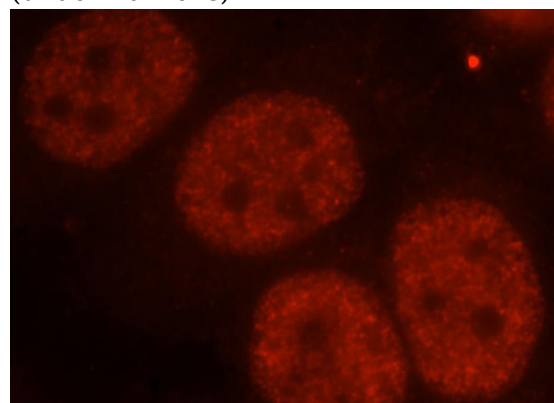
Immunohistochemical of paraffin-embedded human ovary tumor using Catalog No:110666(FIP1L1 antibody) at dilution of 1:50 (under 10x lens)

Ig Type

Rabbit IgG

Applications

ELISA, WB, IHC, IF



Dilutions

Recommended Dilution:

WB: 1:200-1:2000

Immunofluorescent analysis of MCF-7 cells, using

FIP1L1 antibody



Catalog Number: 110666

FIP1L1 antibody Catalog No:110666 at 1:25

dilution and Rhodamine-labeled goat anti-rabbit
IgG (red).