

HSP60 antibody

Catalog Number: 107266

Product name

HSP60 antibody

Specificity

Human, Mouse, Rat; other species not tested.

Antibody description

HSP60 Mouse Monoclonal antibody. Positive WB detected in HeLa cells, HepG2 cells, MCF7 cells. Positive IP detected in mouse liver tissue. Positive FC detected in HeLa cells. Positive IF detected in HeLa cells. Positive IHC detected in human ovary tumor tissue, human skin cancer tissue, human spleen tissue, human testis tissue, human tonsil tissue, human tonsillitis tissue. Observed molecular weight by Western-blot: 60 kDa

Preparation

This antibody was obtained by immunization of HSP60 recombinant protein (Accession Number: NM_002156). Purification method: Protein A purified.

Formulation

PBS with 0.02% sodium azide and 50% glycerol pH 7.3.

Storage

Store at -20°C. DO NOT ALIQUOT

Clonality

Monoclonal

Ig Type

Mouse IgG1

Applications

ELISA, IF, FC, IP, WB, IHC

Dilutions

Recommended Dilution:

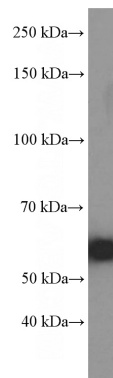
WB: 1:1000-1:10000

IP: 1:1000-1:10000

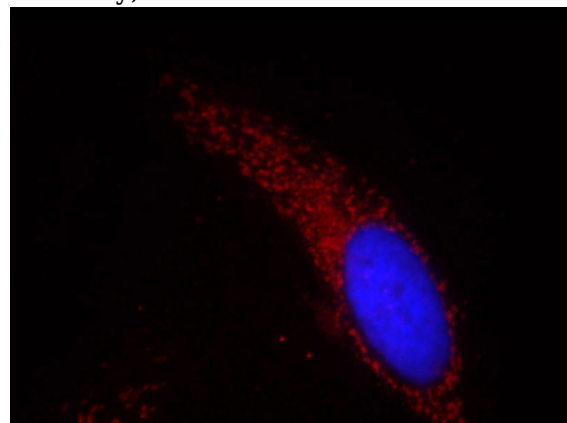
IHC: 1:20-1:200


IF: 1:20-1:200

Validations



HeLa cells were subjected to SDS PAGE followed by western blot with Catalog No:107266(HSPD1 Antibody) at dilution of 1:4000

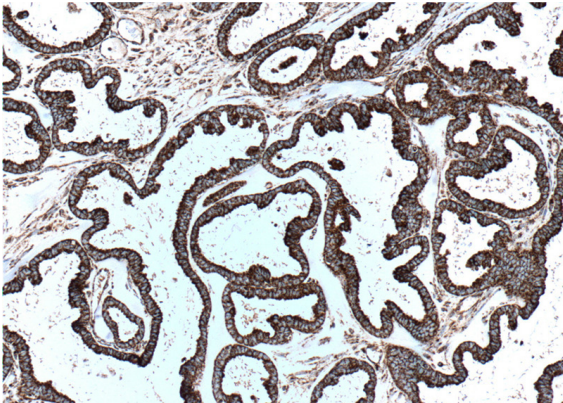


Immunofluorescent analysis of HeLa cells, using HSPD1 antibody Catalog No: at 1:50 dilution and Rhodamine-labeled goat anti-mouse IgG (red). Blue pseudocolor = DAPI (fluorescent DNA dye). 

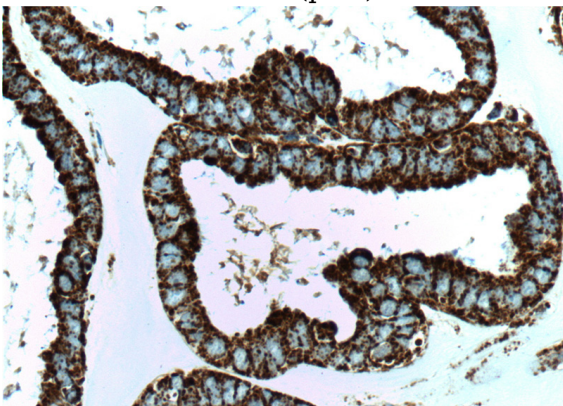
IP Result of anti-HSPD1 (IP:Catalog No:107266, 5ug; Detection:Catalog No:107266 1:2000) with mouse liver tissue lysate 4000ug.

HSP60 antibody

Catalog Number: 107266

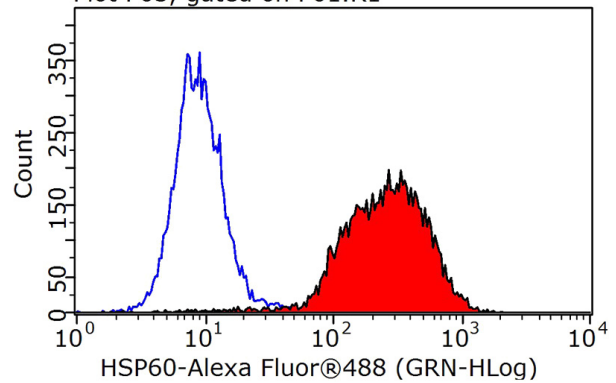


Immunohistochemistry of paraffin-embedded human ovary tumor tissue slide using Catalog No:107266(HSPD1 Antibody) at dilution of 1:500 (under 10x lens). heat mediated antigen retrieved with Tris-EDTA buffer(pH9).



Immunohistochemistry of paraffin-embedded human ovary tumor tissue slide using Catalog No:107266(HSPD1 Antibody) at dilution of 1:500 (under 40x lens). heat mediated antigen retrieved with Tris-EDTA buffer(pH9).

Plot P03, gated on P01.R1



1X10⁶ HeLa cells were stained with 0.2ug HSPD1 antibody (Catalog No:107266, red) and control antibody (blue). Fixed with 90% MeOH blocked with 3% BSA (30 min). Alexa Fluor 488-conjugated AffiniPure Goat Anti-Mouse IgG(H+L) with dilution 1:1000.