

SHC antibody

Catalog Number: 115266

Product name

SHC antibody

IHC: 1:20-1:200

IF: 1:10-1:100

Specificity

Human, Mouse; other species not tested.

Antibody description

SHC Rabbit Polyclonal antibody. Positive WB detected in A431 cells, HeLa cells, mouse skin tissue. Positive IHC detected in human prostate cancer tissue. Positive IF detected in Hela cells. Observed molecular weight by Western-blot: 66 kDa

Preparation

This antibody was obtained by immunization of SHC recombinant protein (Accession Number: NM_183001). Purification method: Antigen affinity purified.

Formulation

PBS with 0.1% sodium azide and 50% glycerol pH 7.3.

Storage

Store at -20°C. DO NOT ALIQUOT

Clonality

Polyclonal

Ig Type

Rabbit IgG

Applications

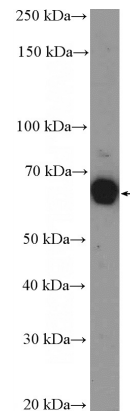
ELISA, IHC, IF, WB

Dilutions

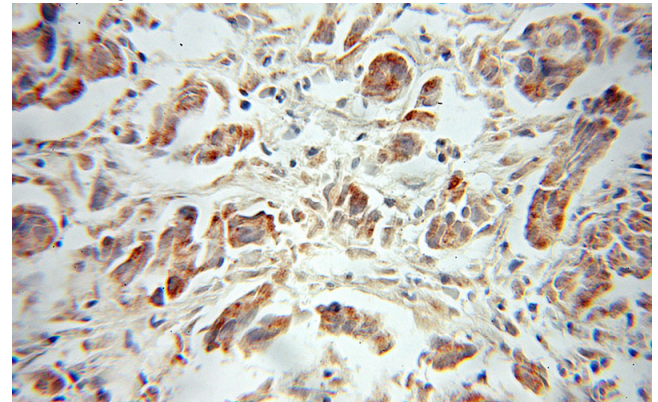
Recommended Dilution:

WB: 1:500-1:5000

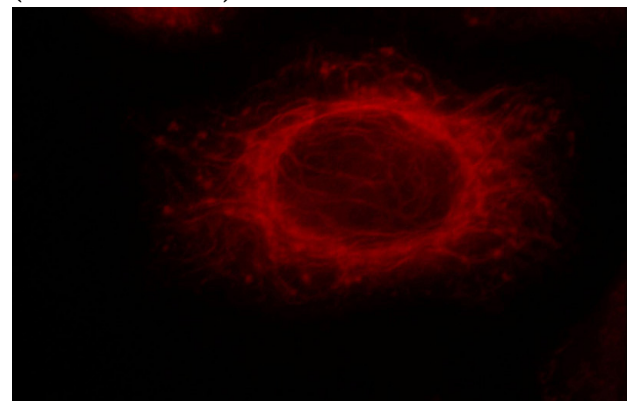
Validations



A431 cells were subjected to SDS PAGE followed by western blot with Catalog No:115266(SHC1 Antibody) at dilution of 1:1000



Immunohistochemical of paraffin-embedded human prostate cancer using Catalog No:115266(SHC1 antibody) at dilution of 1:50 (under 10x lens)



Immunofluorescent analysis of HeLa cells, using

SHC antibody



Catalog Number: 115266

SHC1 antibody Catalog No:115266 at 1:25

dilution and Rhodamine-labeled goat anti-rabbit
IgG (red).