

# EIF5 antibody

Catalog Number: 110266

## Product name

EIF5 antibody

## Specificity

Human, Mouse, Rat; other species not tested.

## Antibody description

EIF5 Rabbit Polyclonal antibody. Positive WB detected in CHO cells. Positive IHC detected in human pancreas cancer tissue. Observed molecular weight by Western-blot: 50 kDa

## Preparation

This antibody was obtained by immunization of EIF5 recombinant protein (Accession Number: NM\_183004). Purification method: Antigen affinity purified.

## Formulation

PBS with 0.1% sodium azide and 50% glycerol pH 7.3.

## Storage

Store at -20°C. DO NOT ALIQUOT

## Clonality

Polyclonal

## Ig Type

Rabbit IgG

## Applications

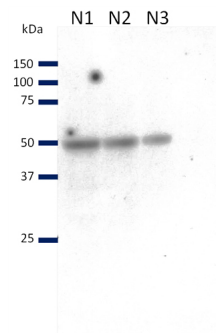
ELISA, IHC, WB

## Dilutions

Recommended Dilution:

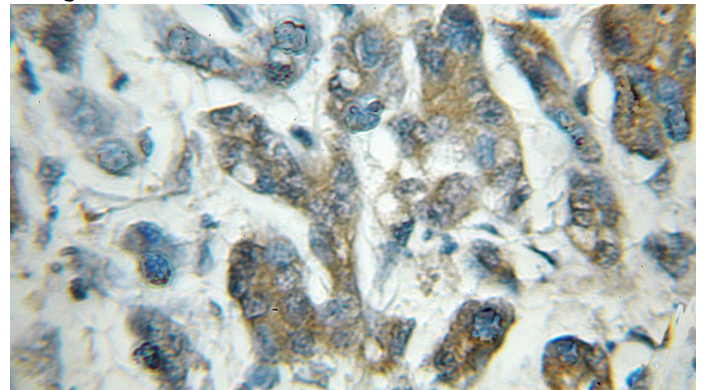
WB: N/AIHC: 1:20-1:200

## Validations



N=3 CHO Flp-In cell line (Invitrogen) whole cell lysate on a 10% gel probed with 1:500 anti-eIF5. 1 min exposure to film

WB result of EIF5 antibody (Catalog No:110266, 1:500) with CHO cell lysate by Dr. Emma Hargreaves.



Immunohistochemical of paraffin-embedded human pancreas cancer using Catalog No:110266(EIF5 antibody) at dilution of 1:50 (under 10x lens)