

CCDC158 antibody



Catalog Number: 108966

Product name

CCDC158 antibody

Recommended Dilution:

WB: 1:500-1:5000

Immunogen

IP: 1:200-1:2000

[Human CCDC158 Recombinant protein \(His tag\)](#)

IHC: 1:20-1:200

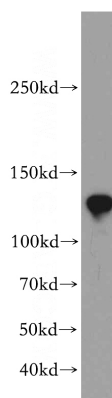
Specificity

Human, Mouse, Rat; other species not tested.

Validations

Antibody description

CCDC158 Rabbit Polyclonal antibody. Positive IHC detected in human kidney tissue, human testis tissue. Positive IP detected in mouse testis tissue. Positive WB detected in mouse testis tissue, human testis tissue. Observed molecular weight by Western-blot: 127-140kd



Preparation

This antibody was obtained by immunization of CCDC158 recombinant protein (Accession Number: BC035224). Purification method: Antigen affinity purified.

mouse testis tissue were subjected to SDS PAGE followed by western blot with Catalog No:108966(CCDC158 antibody) at dilution of 1:500

Formulation

PBS with 0.02% sodium azide and 50% glycerol pH 7.3.

Storage

Store at -20°C. DO NOT ALIQUOT

Clonality

Polyclonal

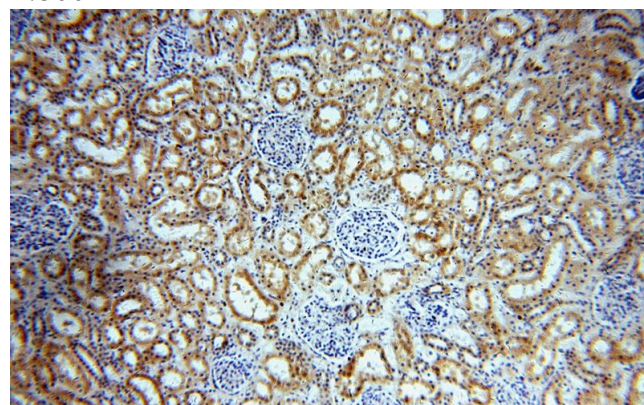
Ig Type

Rabbit IgG

Applications

ELISA, WB, IHC, IP

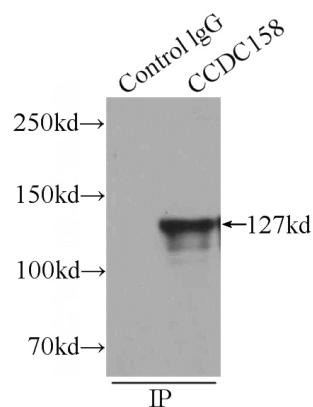
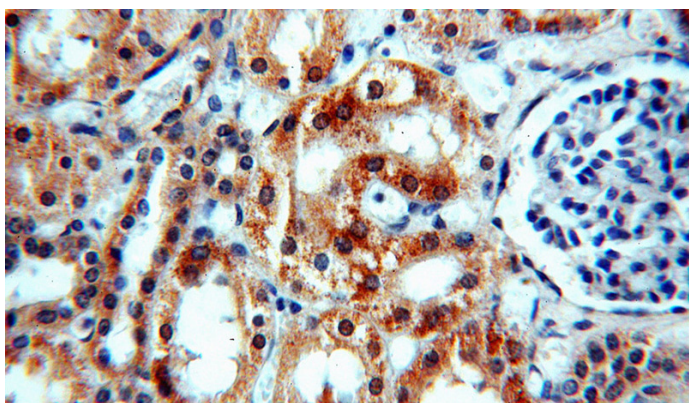
Dilutions



Immunohistochemical of paraffin-embedded human kidney using Catalog No:108966(CCDC158 antibody) at dilution of 1:100 (under 10x lens)

CCDC158 antibody

Catalog Number: 108966



Immunohistochemical of paraffin-embedded human kidney using Catalog No:108966(CCDC158 antibody) at dilution of 1:100 (under 40x lens)

IP Result of anti-CCDC158 (IP:Catalog No:108966, 4ug; Detection:Catalog No:108966 1:500) with mouse testis tissue lysate 6000ug.