

KISS1 Polyclonal Antibody



Catalog Number: 163966

Product name

KISS1 Polyclonal Antibody

Specificity

Human, Mouse

Antibody description

Polyclonal antibody to KISS1

Preparation

Antigen: A synthetic peptide of human KISS1

Formulation

PBS with 0.02% sodium azide, 50% glycerol, pH7.3.

Storage

Store at -20°C. Avoid freeze / thaw cycles.

Clonality

Polyclonal

Ig Type

Rabbit IgG

Applications

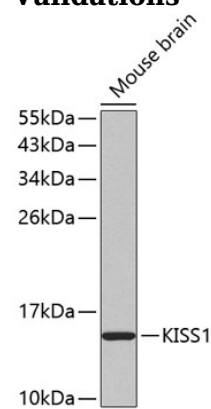
WB, IHC

Dilutions

WB 1:500 - 1:2000

IHC 1:50 - 1:200

Validations



Western blot - KISS1 Polyclonal Antibody

Western blot analysis of extracts of mouse brain, using KISS1 antibody .Secondary antibody: HRP Goat Anti-Rabbit IgG (H+L) at 1:10000 dilution.Lysates/proteins: 25ug per lane.Blocking buffer: 3% nonfat dry milk in TBST.