

CRLS1 antibody

Catalog Number: 109566

Product name

CRLS1 antibody

Specificity

human, mouse; other species not tested.

Antibody description

CRLS1 Rabbit Polyclonal antibody. Positive IHC detected in human breast cancer. Positive WB detected in mouse heart tissue. Observed molecular weight by Western-blot: 50 kDa

Preparation

This antibody was obtained by immunization of Peptide (Accession Number: BC069010). Purification method: Antigen affinity purified.

Formulation

PBS with 0.1% sodium azide and 50% glycerol pH 7.3.

Storage

Store at -20°C. DO NOT ALIQUOT

Clonality

Polyclonal

Ig Type

Rabbit IgG

Applications

ELISA, WB, IHC

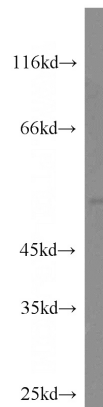
Dilutions

Recommended Dilution:

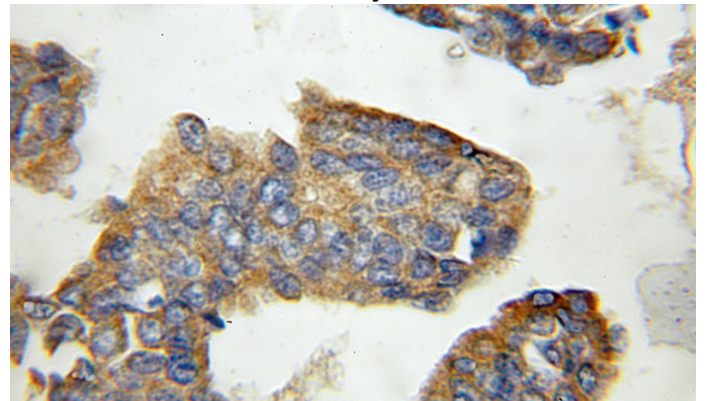
WB: 1:200-1:1000

IHC: 1:20-1:200

Validations



mouse heart tissue were subjected to SDS PAGE followed by western blot with Catalog No:109566(CRLS1 antibody) at dilution of 1:300



Immunohistochemical of paraffin-embedded human breast cancer using Catalog No:109566(CRLS1 antibody) at dilution of 1:100 (under 10x lens)