

BORIS antibody

Catalog Number: 108566

Product name

BORIS antibody

IHC: 1:20-1:200

IF: 1:20-1:200

Specificity

Human, Mouse, Rat; other species not tested.

Antibody description

BORIS Rabbit Polyclonal antibody. Positive WB detected in PC-3 cells, HeLa cells, mouse testis tissue, rat testis tissue. Positive IF detected in SH-SY5Y cells, HeLa cells. Positive IHC detected in human ovary tumor tissue. Observed molecular weight by Western-blot: 75 kDa

Preparation

This antibody was obtained by immunization of BORIS recombinant protein (Accession Number: NM_001269040). Purification method: Antigen affinity purified.

Formulation

PBS with 0.1% sodium azide and 50% glycerol pH 7.3.

Storage

Store at -20°C. DO NOT ALIQUOT

Clonality

Polyclonal

Ig Type

Rabbit IgG

Applications

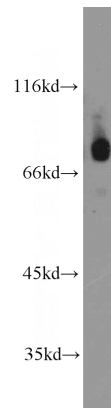
ELISA, IHC, IF, WB

Dilutions

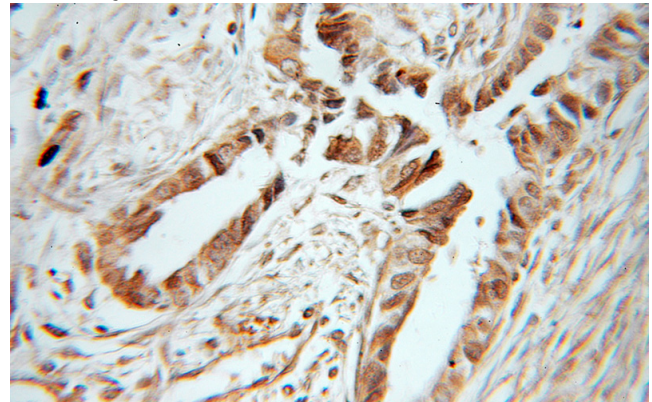
Recommended Dilution:

WB: 1:500-1:5000

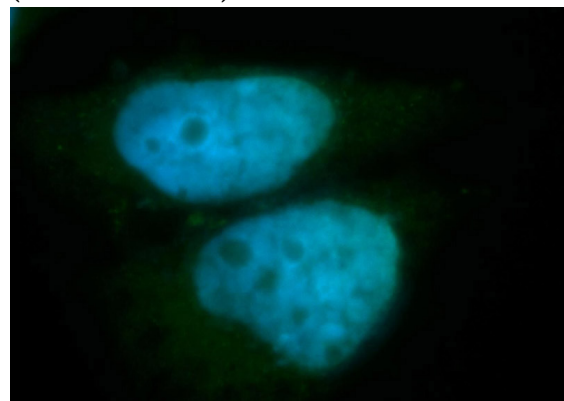
Validations



PC-3 cells were subjected to SDS PAGE followed by western blot with Catalog No:117213(BORIS antibody) at dilution of 1:1000



Immunohistochemical of paraffin-embedded human ovary tumor using Catalog No:117213(BORIS antibody) at dilution of 1:50 (under 40x lens)



Immunofluorescent analysis of SH-SY5Y7 cells,

BORIS antibody



Catalog Number: 108566

using CTCFL antibody Catalog No:117213 at 1:50 dilution and FITC-labeled donkey anti-rabbit

IgG(green). Blue pseudocolor = DAPI (fluorescent DNA dye).