

# Anti-MAGEE1 Rabbit antibody



Catalog Number: 168566

## Product name

Anti-MAGEE1 Rabbit antibody

## Specificity

Human

## Antibody description

MAGEE1 Rabbit monoclonal antibody

## Preparation

Antigen: Recombinant protein of human MAGEE1

## Formulation

Supplied in 50nM Tris-Glycine(pH 7.4), 0.15M NaCl, 40%Glycerol, 0.01% sodium azide and 0.05% BSA.

## Storage

Store at 4°C short term. Aliquot and store at -20°C long term. Avoid freeze / thaw cycle.

## Clonality

Monoclonal

## Ig Type

Rabbit IgG

## Applications

WB, IHC-P, ICC/IF, FC, IP

## Dilutions

1:1000

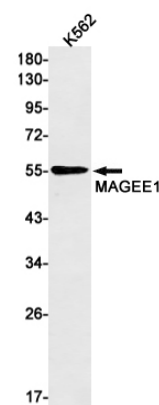
1:20-1:500

1:100

1:20

1:20

## Validations



Western blot detection of MAGEE1 in K562 cell lysates using MAGEE1 Rabbit mAb(1:1000 diluted). Predicted band size:41 kDa. Observed band size:55kDa.