

# SPHK1-Phospho-Ser225 antibody



Catalog Number: 115566

---

## Product name

SPHK1-Phospho-Ser225 antibody

## Specificity

Human; other species not tested.

## Antibody description

SPHK1-Phospho-Ser225 Rabbit Polyclonal antibody. Positive WB detected in L02 cells, human testis tissue. Observed molecular weight by Western-blot: 45-47kd

## Preparation

This antibody was obtained by immunization of Peptide (Accession Number: NM\_182965). Purification method: Antigen affinity purified.

## Formulation

PBS with 0.1% sodium azide and 50% glycerol pH 7.3.

## Storage

Store at -20°C. DO NOT ALIQUOT

## Clonality

Polyclonal

## Ig Type

Rabbit IgG

## Applications

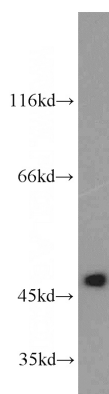
ELISA, WB

## Dilutions

Recommended Dilution:

WB: 1:200-1:2000

## Validations



L02 cells were subjected to SDS PAGE followed by western blot with Catalog No:115566(SPHK1-Phospho-Ser225 antibody) at dilution of 1:500