

# RBPJL antibody



Catalog Number: 114566

## Product name

RBPJL antibody

## Specificity

Human; other species not tested.

## Antibody description

RBPJL Rabbit Polyclonal antibody. Positive WB detected in Jurkat cells, Raji cells. Observed molecular weight by Western-blot: 57-69 kDa

## Preparation

This antibody was obtained by immunization of RBPJL recombinant protein (Accession Number: NM\_014276). Purification method: Antigen affinity purified.

## Formulation

PBS with 0.1% sodium azide and 50% glycerol pH 7.3.

## Storage

Store at -20°C. DO NOT ALIQUOT

## Clonality

Polyclonal

## Ig Type

Rabbit IgG

## Applications

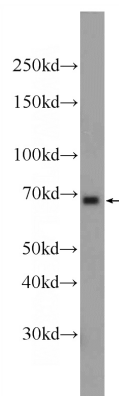
ELISA, WB

## Dilutions

Recommended Dilution:

WB: 1:500-1:5000

## Validations



Jurkat cells were subjected to SDS PAGE followed by western blot with Catalog No:114566(RBPJL Antibody) at dilution of 1:1500