

PAMR1 antibody

Catalog Number: 113566

Product name

PAMR1 antibody

Specificity

human, mouse, rat; other species not tested.

Antibody description

PAMR1 Rabbit Polyclonal antibody. Positive WB detected in mouse skeletal muscle tissue. Positive IHC detected in human skeletal muscle. Observed molecular weight by Western-blot: 78-82kd,67-70kd

Preparation

This antibody was obtained by immunization of Peptide (Accession Number: NM_015430). Purification method: Antigen affinity purified.

Formulation

PBS with 0.02% sodium azide and 50% glycerol pH 7.3.

Storage

Store at -20°C. DO NOT ALIQUOT

Clonality

Polyclonal

Ig Type

Rabbit IgG

Applications

ELISA, WB, IHC

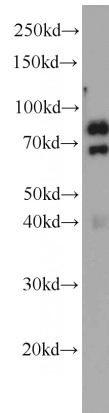
Dilutions

Recommended Dilution:

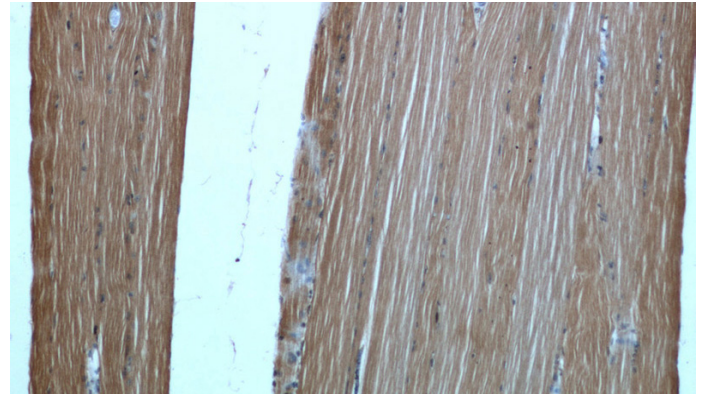
WB: 1:200-1:2000

IHC: 1:20-1:200

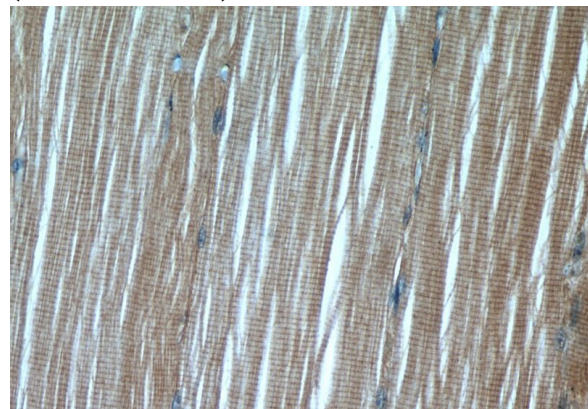
Validations



mouse skeletal muscle tissue were subjected to SDS PAGE followed by western blot with Catalog No:113566(PAMR1 antibody) at dilution of 1:500



Immunohistochemical of paraffin-embedded human skeletal muscle using Catalog No:113566(PAMR1 antibody) at dilution of 1:50 (under 10x lens)



Immunohistochemical of paraffin-embedded human skeletal muscle using Catalog No:113566(PAMR1 antibody) at dilution of 1:50 (under 40x lens)