

Anti-IHPK1 antibody



Catalog Number: 103566

Product name

Anti-IHPK1 antibody

Immunogen

[Human IHPK1 \(His & GST Tag\) recombinant protein](#)

Specificity

Human IHPK1

Antibody description

Rabbit polyclonal to IHPK1

Preparation

Produced in rabbits immunized with purified, recombinant Human IHPK1 (rh IHPK1; Q92551-1; Met1-Gln441). IHPK1 specific IgG was purified by Human IHPK1 affinity chromatography.

Formulation

0.2 μ m filtered solution in PBS

Storage

This antibody can be stored at 2°C-8°C for one month without detectable loss of activity. Antibody products are stable for twelve months from date of receipt when stored at -20°C to -80°C.

Preservative-Free.

Sodium azide is recommended to avoid contamination (final concentration 0.05%-0.1%). It is toxic to cells and should be disposed of properly. Avoid repeated freeze-thaw cycles.

Clonality

Polyclonal

Ig Type

Rabbit IgG

Applications

ELISA, WB

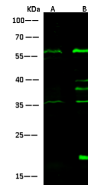
Dilutions

WB: 10-20 μ g/mL

ELISA: 0.1-0.2 μ g/mL

This antibody can be used at 0.1-0.2 μ g/mL with the appropriate secondary reagents to detect Human IHPK1. The detection limit for Human IHPK1 is < 0.039 ng/well.

Validations



Lanes	A	B
Items		
Sample (whole cell lysate)	MOLT4	Hela
Sample Volume (μ g/lane)	30	30
Gel	13% SDS-PAGE reducing gel	
Recommended Concentration	10-20 μ g/ml	
Secondary Antibody	Dylight 800-labeled Antibody To Rabbit IgG (H+L), at 1:5000 dilution.	
Explanation	Developed using Odyssey imaging system. Predicted band size : 56 kDa Observed band size : 56 kDa Additional bands at : 39 kDa, 37 kDa, 35 kDa and 18 kDa (We are unsure as to the identity of these extra bands. They are possible non-specific bindings).	

IHPK1 Antibody, Rabbit PAb, Antigen Affinity Purified, Western blot