

# HSP47 antibody

Catalog Number: 111566

## Product name

HSP47 antibody

WB: 1:200-1:1000

IHC: 1:20-1:200

## Specificity

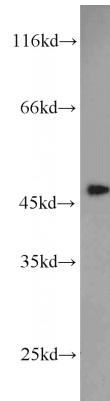
Human, Mouse, Rat; other species not tested.

IF: 1:10-1:100

## Antibody description

HSP47 Rabbit Polyclonal antibody. Positive IF detected in HeLa cells. Positive IHC detected in human hepatocirrhosis tissue. Positive FC detected in HepG2 cells. Positive WB detected in HT-1080 cells, A2780 cells, A431 cells, HeLa cells, NIH/3T3 cells. Observed molecular weight by Western-blot: 46-48 kDa

## Validations



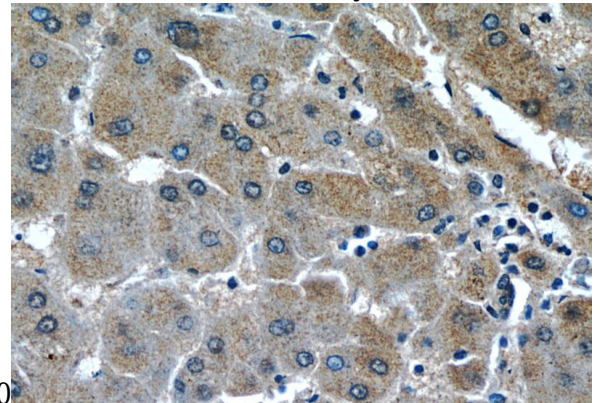
## Preparation

This antibody was obtained by immunization of HSP47 recombinant protein (Accession Number: XM\_024448756). Purification method: Antigen affinity purified.

HT-1080 cells were subjected to SDS PAGE followed by western blot with Catalog No:111566(SERPINH1 antibody) at dilution of

## Formulation

PBS with 0.1% sodium azide and 50% glycerol pH 7.3.



## Storage

Store at -20°C. DO NOT ALIQUOT

## Clonality

Polyclonal

Immunohistochemistry of paraffin-embedded human hepatocirrhosis tissue slide using Catalog No:111566(SERPINH1 Antibody) at dilution of

## Ig Type

Rabbit IgG

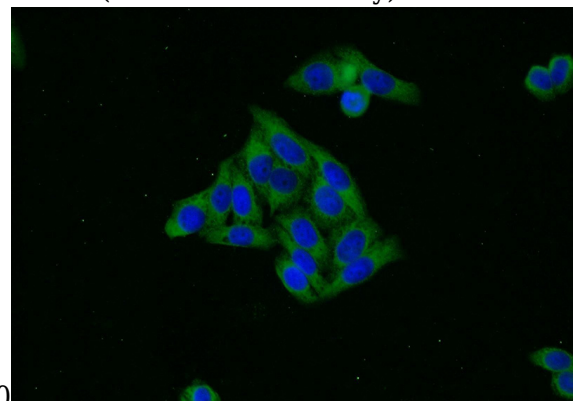
## Applications

ELISA, IHC, WB, FC, IF

## Dilutions

Recommended Dilution:

1:50

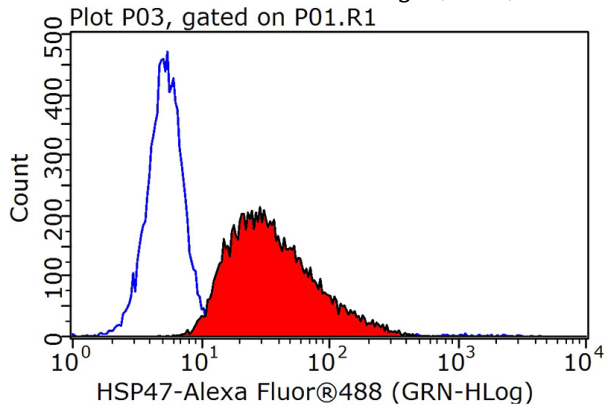


# HSP47 antibody



Catalog Number: 111566

Immunofluorescent analysis of HeLa cells using Catalog No:111566(SERPINH1 Antibody) at dilution of 1:25 and Alexa Fluor 488-conjugated AffiniPure Goat Anti-Rabbit IgG(H+L)



1X10<sup>6</sup> HepG2 cells were stained with 0.2ug SERPINH1 antibody (Catalog No:111566, red) and control antibody (blue). Fixed with 90% MeOH blocked with 3% BSA (30 min). Alexa Fluor 488-conjugated AffiniPure Goat Anti-Rabbit IgG(H+L) with dilution 1:1000.