

# Human Cyclin A1/CCNA1 (His Tag) recombinant protein



Catalog Number: 501566

## General Information

### Protein Construction

A DNA sequence encoding the full length of human CCNA1 isoform a (NP\_003905.1) (Met 1-Gln 465) was expressed, with a polyhistidine tag at the N-terminus.

### Organism

Human

### Expression Host

Baculovirus-Insect Cells

## QC Testing

### Activity

1. Measured by its binding ability in a functional ELISA. Immobilized human His-CCNA1 (Cat:501566) at 10 µg/ml (100 µl/well) can bind biotinylated human CDK1 (Cat:500265). The EC<sub>50</sub> of biotinylated human CDK1 (Cat:500265) is 0.02-0.04 µg/ml.

2. Measured by its binding ability in a functional ELISA. Immobilized human His-CCNA1 (Cat:501566) at 10 µg/ml (100 µl/well) can bind biotinylated human CDK2-His (Cat:502274). The EC<sub>50</sub> of biotinylated human CDK2-His (Cat:502274) is 0.07-0.15 µg/ml.

### Purity

> 96 % as determined by SDS-PAGE

### Endotoxin

< 1.0 EU per µg of the protein as determined by the LAL method

### Stability

Samples are stable for up to twelve months from date of receipt at -70°C

### Predicted N terminal

His

### Molecular Mass

The recombinant human CCNA1 consists of 483 amino acids and predicts a molecular mass of 54.6 kDa. It migrates as an approximately 50 kDa band in SDS-PAGE under reducing conditions.

### Formulation

Lyophilized from sterile 20mM Tris, 500mM NaCl, pH 7.4

1. 5 % trehalose and mannitol are added as protectants before lyophilization.

2. Please contact us for any concerns or special requirements.

## Usage Guide

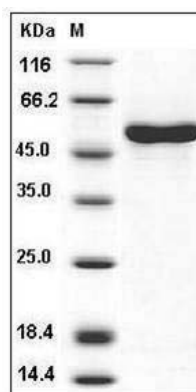
### Storage

Store it under sterile conditions at -20°C to -80°C. It is recommended that the protein be aliquoted for optimal storage. Avoid repeated freeze-thaw cycles.

### Reconstitution

Adding sterile water, prepare a stock solution of 0.25 mg/ml. Concentration is measured by UV-Vis.

### SDS-PAGE



Human CCNA1 / Cyclin-A1 Protein (His Tag) SDS-PAGE